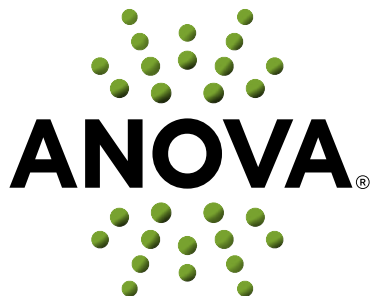


Site Furnishings

Create your
first and lasting
impression
with ANOVA.[®]
outdoor
furniture



About Us

The Anova Difference

Our mission is to design and manufacture beautiful, comfortable outdoor furniture that helps communities come together.

THE LEGACY

For more than 40 years, Anova has been an innovator in site furnishings. We introduced aggregate panels in the 1970s. We patented coating technologies in the 1990s. And in the 21st century, Anova continues to push the envelope on total value, from design to manufacturing.

QUALITY

Anova's concept of quality encompasses design excellence, first-class materials, and advanced manufacturing techniques that yield beautiful furnishings built to last: durable, well-made products at a tremendous value. We stand behind our warranty 100%.

INTEGRITY

Honesty and integrity are core values at Anova. To us, integrity means we stand behind our word and our promises; you can depend on us and our products. It also means we treat people well and we take our responsibilities (social, economic, and environmental) seriously.

COMFORT

Comfort is an essential element in how people experience an environment. We design for people, not awards. This means making continuous improvements in design, materials and techniques while keeping maximum user comfort in mind.

RESPONSIVENESS

We provide prompt, dependable service and delivery. Our customer service center is staffed at Anova headquarters and our network of sales representatives has immediate access to production and product development teams. Since most of our products and components are made in the USA, we can easily control quality, costs, and inventory.

“People
come first.”

Eric Gilbert — CEO of Anova

“Anova’s foundation rests on a community of individuals, and building a great sustainable business boils down to individual interactions. Together, we’ve built an atmosphere of trust and respect with our customers and the design community, which allows our business to grow and thrive.”



Contents

Impressions: Modern

| | |
|-------------------|----|
| Airi | 12 |
| Coronado | 16 |
| Mixx* | 18 |
| Allure | 22 |
| Exposition | 26 |
| Beacon Hill* | 28 |
| Latitude* | 32 |
| Cosmopolitan* | 36 |
| Madison | 38 |
| Metrix | 40 |
| Newcastle | 42 |
| Alliance | 44 |
| Element | 46 |
| Upside | 48 |
| Tuscany* | 50 |
| Modern Bike Racks | 52 |

Impressions: Classic

| | |
|-------------|----|
| Park Lane | 54 |
| Rendezvous* | 56 |
| Wainwright | 60 |
| Horizon | 62 |

* ADA styles available at anovafurnishings.com





Foundations: Traditional

| | |
|------------------------|----|
| Ultra* | 66 |
| Rally | 70 |
| Veranda | 72 |
| Reflections | 74 |
| Courtyard | 76 |
| Victory | 78 |
| Picnic Tables* | 80 |
| Traditional Bike Racks | 84 |

Foundations: Natural

| | |
|-----------|----|
| Balance | 86 |
| Essence | 88 |
| Structure | 90 |

| | |
|----|-----------------------------|
| 01 | About Us |
| 04 | Environmental Consciousness |
| 05 | Bamboo |
| 06 | Recycled Plastic |
| 07 | Fusion Advantage |
| 08 | Custom Capabilities |
| 09 | Warranty |
| 10 | Impressions |
| 12 | Modern |
| 54 | Classic |
| 64 | Foundations |
| 66 | Traditional |
| 86 | Natural |
| 92 | Colors |
| 94 | Index |
| 96 | Contact Us |

Sustainable

By Design

Anova has been creating environmentally friendly products since 1970. To meet our customers' expectations for high-design, high-quality products that also help them achieve their sustainable goals, Anova adheres to the following practices:

RECYCLED MATERIALS

We are committed to creating our furnishings with environmentally-friendly practices, using recycled materials whenever possible. We aim to increase our use of recycled materials, as well as the number of our products that encourage consumers to recycle. Our recycled plastic lumber has a 95% recycled content by weight with at least 90% of that coming from post consumer content. This recycled plastic lumber does not emit or contain any VOC materials, and is considered to be low- or non-toxic. On average, the steel used in our products is made of 70% recycled material and our aluminum extrusions are 85% recycled material.

RECYCLABLE/LONG LASTING PRODUCTS

The metals and plastic used on Anova products not only contain recycled content, but can be recycled, as well. The natural wood and stone material found on various products in the line can also be recycled. Many of our products break down into components to make recycling easier. Anova designs products with high quality, low-maintenance materials and finishes. For example, products with our exclusive proprietary Fusion Advantage clean without chemicals and still maintain a durable, high-gloss look. Most importantly, our products are built to last a very long time. Going well beyond the 5- or 7-year warranty, many customers have had our products in service for more than 20 years. That long life translates into minimized environmental impact.

ENVIRONMENTALLY SUSTAINABLE PROCESSES AND SYSTEMS

At Anova, we are constantly working to develop greater efficiency in our production processes, and thereby to reduce energy consumption and waste. In 2007, we switched from an anodized coating to a polyester powder coating in order to reduce pollutants emitted during the coating process. We also added reclaiming filters to our powder coating lines, minimizing wasted materials. Anova manufacturing locations are centrally located in the Midwest, and nearly all product components come from suppliers less than 200 miles from our facilities. A majority of products ship to job sites within a 500-mile radius from our locations, and most of our products ship in either recyclable cardboard or recycled skids.

LEED the way

Many of our customers are committed to achieving LEED certification, and our products can help. For example, specifiers can use our bike racks to obtain LEED certification and credit requirements for "Alternative Transportation, Bicycle Friendly Site Planning" projects. Also, our smoking control products allow clients to designate smoking locations that are a safe distance away from non-smoking areas, earning credits in the "Environmental Tobacco Smoke Control" category. Clients can earn credits also by using Anova products manufactured from recycled metals, plastics, and bamboo.

Bamboo

Durable • Sustainable • Comfortable

With superior structural and mechanical properties over other natural and engineered materials, Anova uses laminated engineered planks carefully selected from mature bamboo — the most renewable resource on the planet. Only bamboo chosen for optimal hardness and strength is used.

- Four out of 1,600 bamboo species are used and are sourced primarily from Central and South America, China, Vietnam and India
- This superior quality, exterior grade bamboo is engineered into planks using low V.O.C. adhesives and finished with a UV-resistant stain
- Top-quality engineered bamboo possesses a Janka hardness and structural rating superior to teak
- Bamboo is 20% more stable in climate and temperature changes than commonly used timber
- Class A fire rating — ASTM E 84 Surface Burning

TEN-YEAR WARRANTY

10-year limited structural warranty with annual maintenance. See full details on multi-year warranties on page 9.

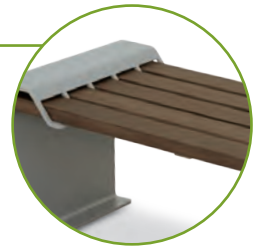
FINISHES

Available in three unique finishes. As with any natural product, protect the beauty of bamboo with regular staining or refinishing as needed.

BAMBOO PRODUCT LINES

Alliance

- Benches



Allure

- Benches



Beacon Hill

- Benches
- Planters
- Receptacles
- Recyclers
- Tables



Coronado

- Benches



Madison

- Benches
- Conversation Table
- Receptacles
- Recyclers



Mixx

- Benches
- Stools
- Tables



Tuscany

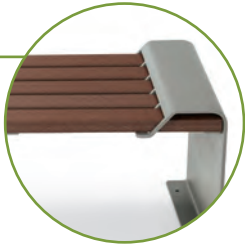
- Chairs
- Tables



RECYCLED PLASTIC PRODUCT LINES

Alliance

- Benches



Allure

- Benches



Beacon Hill

- Benches
- Planters
- Receptacles
- Recyclers
- Tables



Coronado

- Benches



Madison

- Benches
- Conversation Table
- Receptacles
- Recyclers



Mixx

- Benches
- Stools
- Tables



Tuscany

- Chairs
- Tables



Recycled Plastic For The Real World

Our recycled plastic lumber is 95% recycled content by weight, and at least 90% of its material comes from post-consumer content. This recycled plastic lumber does not emit or contain any VOC materials, and is considered to be low- or non-toxic. The fade-resistant color is uniform throughout the plank.

Anova bench is still beautiful after withstanding three Midwest winters.



TWENTY-YEAR WARRANTY

20-year limited structural warranty. See full details on multi-year warranties on page 9.

FINISHES

Two classic colors resist fading and retain their beauty without the need for staining or painting. See colors on page 92.

The Fusion Advantage™

Anova's patented Fusion Advantage technology is one of the strongest, most sophisticated innovations in modern outdoor furniture. This process allows Anova products to have superior resistance to the elements and maintain their beauty.



- **PRIMED STEEL**
We begin with heavy-duty steel to provide a solid foundation.
- **PLASTISOL COATING**
A thick plastisol coating is permanently fused to the steel foundation, creating an impervious rust-proof barrier. The oven-cured plastisol has an average thickness of ¼", including top and bottom coatings.
- **POWDER COATING**
Finally, the plastisol is encapsulated with a richly tinted, high-performance powder coating that creates a seal against the elements and provides a finish that is unmatched in durability.

SEVEN-YEAR WARRANTY

Furnishings protected by the Fusion Advantage are guaranteed for 7 years against rusting, fading, peeling, chipping, cracking, mold and mildew. See full details on multi-year warranties on page 9.

COLORS AND FINISHES

7 textured colors and 15 glossy colors in stock, with custom colors available (call for pricing). See colors on page 92.

Proven Protection

Tabletops, seating surfaces, and receptacle bases protected by the Fusion Advantage are resistant to fading and UV damage; largely unaffected by common acids, salts, and seawater; and resistant to mold, mildew, and fungus. Your furnishings will stay looking new — guaranteed.

Capabilities

Custom Work • Design • Execution

Shaw Park in St. Louis, Missouri is the city's oldest and largest park and offers an oasis from the bustle of the city. The park's recent addition of the Enterprise Corporate Pavilion is architecturally stunning and can accommodate up to 120 guests. Designed to serve the St. Louis community, this structure is furnished entirely with custom hybrid tables developed by Anova and created specifically for this city project.



CUSTOMIZATION

In order to help our clients create the perfect space, we offer custom and commemorative options on select benches, receptacles, tables, and bike racks. Anova's design team will work with you to create furniture that reflects the personality of your business, school, or community.

DESIGN INTEGRATION

At Anova, we control the entire design, engineering, and manufacturing process. Whether we are engineering benches to carry 200 pounds per linear foot or fine-tuning the angle of back support, our commitment to quality never wavers.

EXECUTING YOUR DESIGN VISION

Anova will bring your site plan to life. As a strong and agile partner, we listen to your needs and work with you to create the perfect furnishings for your project and budget. Contact us at anovafurnishings.com/contact or call our headquarters at 800.231.1327.

Warranties

Finish • Structural

STRUCTURAL WARRANTIES

Metal components: limited twenty-year structural warranty.

Recycled plastic components: limited twenty-year structural warranty that also covers splitting, fungal decay, and insect damage.

Natural stone and rotomolded plastic components: limited five-year structural warranty.

Bamboo components: limited ten-year structural warranty with annual maintenance.

FINISH WARRANTIES

Fusion Advantage finish: seven-year warranty against rusting, peeling, chipping, cracking, mold, mildew, fading and defects in materials and/or workmanship.

Powder coated finish: three-year warranty against rusting, peeling, chipping, cracking, mold, mildew, and defects in materials and/or workmanship; Seven-year warranty against fading.

LIMITATIONS

All warranties commence on the date the product is shipped.

Structural warranties are only valid if the product has been assembled and installed per the instruction provided with each shipment and item.

These warranties do not cover acts of misuse, abuse, accidents, lack of maintenance, vandalism or natural disasters.

Any alterations to the product after delivery will void these warranties.

Should any failure occur within these periods, ANOVA will correct the part or parts by repairing or replacing the defective parts to your satisfaction, at no cost to you.

QUESTIONS?

For warranty questions or claims, please contact us at 800-231-1327 or info@anovafurnishings.com.

Impressions



Airi Stix 12



Coronado 16



Exposition 26

Two distinctive portfolios create dynamic first and lasting impressions:

MODERN 12 - 53

CLASSIC 54 - 63



Mixx 18



Rendezvous 56



Tuscany 50

Airi

Tables | Chairs | Benches | Receptacles | Recycler

Organically modern, Airi products showcase contemporary form. Two unique architectural patterns are available in leaf or tree line designs.



Tables AE26T40B and AE26T48B with Leaf Chairs AE26T60LF (foreground) and Stix Chairs AE26T60STX (background) — Table tops shown in honey with slate legs; chairs shown in slate with gray frame



Aluminum Table AE6T40 and Stix Chairs AE26T60STX and Leaf Chair AE26T60LF — shown in textured bronze and silver

FEATURES

Aluminum and steel components are protected with a powder coated finish to resist rusting. Mature exterior grade bamboo is finished with a UV-resistant stain. Benches and tables are portable/surface mount style. Available in colors shown on page 92.

Tables Aluminum or bamboo table tops with pedestal style cast aluminum legs. Available with or without an umbrella hole.

| | | | |
|---------------------------------|----------|----------------|---------|
| 40" Aluminum Round Bistro Table | AE26T40 | 29"H x 40"Dia. | 60 lbs. |
| 48" Aluminum Round Table | AE26T48 | 29"H x 48"Dia. | 70 lbs. |
| 40" Bamboo Round Bistro Table | AE26T40B | 30"H x 40"Dia. | 62 lbs. |
| 48" Bamboo Round Table | AE26T48B | 30"H x 48"Dia. | 72 lbs. |

Chairs Heavy-gauge, perforated, aluminum seat and back with cast aluminum frame and legs.

| | | | |
|-----------------------|------------|--------------------|---------|
| Stix Chair | AE26T60STX | 35"H x 20"W x 23"D | 25 lbs. |
| Leaf Chair | AE26T60LF | 35"H x 20"W x 23"D | 25 lbs. |
| Stix Chair w/Armrests | AE26T70STX | 35"H x 24"W x 23"D | 27 lbs. |
| Leaf Chair w/Armrests | AE26T70LF | 35"H x 24"W x 23"D | 27 lbs. |



Leaf Chair with Armrests AE26T70LF



Lucaya Umbrella 9LPU shown on page 67.



Contour Bench AE2680STX —shown in textured white and textured pewter



Flat Bench AE2690STX



Contour Bench AE2680LF

Benches Heavy-gauge, perforated steel seat with cast aluminum ends. Patented.

| | | | |
|-----------------------|-----------|--------------------|----------|
| 6' Stix Flat Bench | AE2690STX | 18"H x 22"W x 75"L | 83 lbs. |
| 6' Stix Contour Bench | AE2680STX | 35"H x 23"W x 75"L | 134 lbs. |
| 6' Leaf Flat Bench | AE2690LF | 18"H x 22"W x 75"L | 85 lbs. |
| 6' Leaf Contour Bench | AE2680LF | 35"H x 23"W x 75"L | 143 lbs. |



Stix Pattern Receptacle AE2645CT-STX — Shown in textured sandstone and textured pewter



Leaf Pattern Receptacle AE2645CT-LF



Standard Receptacle AE2645CT



Stix Pattern Recycler AE2645RCT-STX

Receptacles Heavy-gauge steel with extruded aluminum frame. Side door features a magnetic door latch, continuous geared hinge and cam lock system.

| | | | |
|--------------------|--------------|--------------------|----------|
| 45 Gallon Standard | AE2645CT | 47"H x 26"W x 22"D | 194 lbs. |
| 45 Gallon Leaf | AE2645CT-LF | 47"H x 26"W x 22"D | 186 lbs. |
| 45 Gallon Stix | AE2645CT-STX | 47"H x 26"W x 22"D | 182 lbs. |

Recyclers Recycle logos laser cut into the steel. Factory-installed recycling decals are available upon request at no charge.

| | | | |
|--------------------|---------------|--------------------|----------|
| 45 Gallon Standard | AE2645RCT | 47"H x 26"W x 22"D | 196 lbs. |
| 45 Gallon Leaf | AE2645RCT-LF | 47"H x 26"W x 22"D | 188 lbs. |
| 45 Gallon Stix | AE2645RCT-STX | 47"H x 26"W x 22"D | 184 lbs. |

Coronado

Benches

Simplicity reinvented in sustainable bamboo or recycled plastic. This sophisticated take on classic design transitions easily from outdoors to interior spaces.



Bamboo Bench CR2780B — shown in honey and textured pewter



Bamboo Bench CR2780B — shown in honey and textured pewter; Coordinating planter BH1850PB shown on page 31

FEATURES

Aluminum components are protected with a powder coated finish to resist rusting. Mature exterior grade bamboo planks are finished with a UV-resistant stain. All plastic planks are 95% recycled content by weight. Benches are portable/surface mount style. Available in colors shown on page 92.

Benches *Bamboo or recycled plastic planks with all aluminum components.*

| | | | |
|-----------------------------------|---------|--------------------|----------|
| 4' Bamboo Contour Bench | CR2784B | 35"H x 23"W x 52"L | 82 lbs. |
| 6' Bamboo Contour Bench | CR2780B | 35"H x 23"W x 76"L | 104 lbs. |
| 4' Recycled Plastic Contour Bench | CR2784R | 35"H x 23"W x 52"L | 98 lbs. |
| 6' Recycled Plastic Contour Bench | CR2780R | 35"H x 23"W x 76"L | 128 lbs. |



Recycled Plastic Receptacle BH1845RBT
shown on page 31



Recycled Plastic Bench CR2780R

Mixx

Tables | Benches | Stools

Warm and inviting, Mixx products deliver a modern vibe. Modular tables, benches and stools in bamboo or recycled plastic allow you to design your perfect space.



Square Table MIX2920B, Rectangular Table MIX2940B and Stool MIX2927B — shown in honey and textured pewter



Square Bar Height Table MIX2930B, Rectangular Bar Height Table MIX2950B and Bar Height Stool MIX2937B — shown in honey and textured pewter

FEATURES

Steel components are protected with a powder coated finish to resist rusting. All recycled plastic planks are 95% recycled content by weight. Mature exterior grade bamboo planks are finished with a UV-resistant stain. Available in colors shown on page 92.

Tables Bamboo or recycled plastic planks with steel frame and legs. Standard height tables available with or without umbrella hole. *ADA compliant.

| | | | |
|--|----------|--------------------|----------|
| 34" Square Bamboo | MIX2925B | 31"H x 34"Sq. | 83 lbs. |
| 42" Square Bamboo* | MIX2920B | 31"H x 42"Sq. | 94 lbs. |
| 34" Square Bamboo Bar Height | MIX2935B | 37"H x 34"Sq. | 104 lbs. |
| 42" Square Bamboo Bar Height | MIX2930B | 37"H x 42"Sq. | 119 lbs. |
| 34" Wide Rectangular Bamboo* | MIX2945B | 31"H x 34"W x 72"L | 118 lbs. |
| 34" Wide Rectangular Bamboo Bar Height | MIX2955B | 37"H x 34"W x 72"L | 148 lbs. |
| 42" Wide Rectangular Bamboo* | MIX2940B | 31"H x 42"W x 72"L | 133 lbs. |
| 42" Wide Rectangular Bamboo Bar Height | MIX2950B | 37"H x 42"W x 72"L | 166 lbs. |
| 34" Square Recycled Plastic | MIX2925R | 31"H x 34"Sq. | 84 lbs. |
| 42" Square Recycled Plastic* | MIX2920R | 31"H x 42"Sq. | 106 lbs. |
| 34" Square Recycled Plastic Bar Height | MIX2935R | 37"H x 34"Sq. | 106 lbs. |
| 42" Square Recycled Plastic Bar Height | MIX2930R | 37"H x 42"Sq. | 131 lbs. |
| 34" Wide Rectangular Recycled Plastic* | MIX2945R | 31"H x 34"W x 72"L | 135 lbs. |
| 34" Wide Rectangular Recycled Plastic Bar Height | MIX2955R | 37"H x 34"W x 72"L | 166 lbs. |
| 42" Wide Rectangular Recycled Plastic* | MIX2940R | 31"H x 42"W x 72"L | 154 lbs. |
| 42" Wide Rectangular Recycled Plastic Bar Height | MIX2950R | 37"H x 42"W x 72"L | 186 lbs. |



Lucaya Umbrella 9LPU-CSC; see details at anovafurnishings.com



Bench MIX2960B, Bar Height Table MIX2930B, and Bar Height Stool MIX2937B — shown in honey and textured pewter

Benches and Stools *Bamboo or recycled plastic planks with steel frame and legs.*

| | | | |
|-----------------------------------|----------|--------------------|---------|
| Bamboo Stool | MIX2927B | 18"H x 15"Sq. | 22 lbs. |
| Bamboo Bar Height Stool | MIX2937B | 25"H x 15"Sq. | 28 lbs. |
| Bamboo 5' Bench | MIX2960B | 18"H x 15"W x 60"L | 47 lbs. |
| Recycled Plastic Stool | MIX2927R | 18"H x 15"Sq. | 24 lbs. |
| Recycled Plastic Bar Height Stool | MIX2937R | 25"H x 15"Sq. | 32 lbs. |
| Recycled Plastic 5' Bench | MIX2960R | 18"H x 15"W x 60"L | 53 lbs. |



Rectangular Table MIX2940R, Bench MIX2960R and Stool MIX2927R — shown in mahogany and textured pewter

Allure

Benches | Bike Rack

The uniquely graceful organic design of the Allure bench creates a distinctly fresh and sophisticated take on outdoor seating.



Contour Bench AL1980B; Flat Bench AL1990B shown in honey and textured pewter



Contour Bench AL1980R shown in mahogany and textured pewter



Contour Bench AL1980 shown in charcoal and textured pewter



Flat Bench AL1990B

FEATURES

Steel and aluminum components are protected with a powder coated finish to resist rusting. All recycled plastic planks are 95% recycled content by weight. Mature exterior grade bamboo planks are finished with a UV-resistant stain. Surface mount style. Available in colors shown on page 92.

Benches Bamboo, recycled plastic or aluminum planks with aluminum accents, steel frame and cast aluminum ends. Flat benches are patented. Contour benches are patent pending.

| | | | |
|-----------------------------------|---------|--------------------|----------|
| 4' Bamboo Contour Bench | AL1984B | 33"H x 25"W x 49"L | 87 lbs. |
| 6' Bamboo Contour Bench | AL1980B | 33"H x 25"W x 73"L | 110 lbs. |
| 4' Bamboo Flat Bench | AL1994B | 17"H x 19"W x 49"L | 47 lbs. |
| 6' Bamboo Flat Bench | AL1990B | 17"H x 19"W x 73"L | 60 lbs. |
| 4' Recycled Plastic Contour Bench | AL1984R | 33"H x 25"W x 49"L | 96 lbs. |
| 6' Recycled Plastic Contour Bench | AL1980R | 33"H x 25"W x 73"L | 124 lbs. |
| 4' Recycled Plastic Flat Bench | AL1994R | 17"H x 19"W x 49"L | 51 lbs. |
| 6' Recycled Plastic Flat Bench | AL1990R | 17"H x 19"W x 73"L | 66 lbs. |
| 4' Aluminum Contour Bench | AL1984 | 33"H x 25"W x 49"L | 85 lbs. |
| 6' Aluminum Contour Bench | AL1980 | 33"H x 25"W x 73"L | 107 lbs. |
| 4' Aluminum Flat Bench | AL1994 | 17"H x 19"W x 49"L | 47 lbs. |
| 6' Aluminum Flat Bench | AL1990 | 17"H x 19"W x 73"L | 59 lbs. |



Receptacle LEX45 shown on page 27



Receptacle TR35DT shown on page 39



Contour Bench AL1980P — shown in textured bronze and textured sandstone; Bike Rack AL19BR2 — shown in textured bronze

FEATURES

Allure Access steel seating is protected by the Fusion Advantage finish (see page 7 for details). Steel and aluminum components are protected with a powder coated finish to resist rusting. Available in colors shown on page 92.

Allure Access Benches Steel seat protected by the Fusion Advantage finish with powder coated cast aluminum legs. Flat bench is patented. Contour bench is patent pending.

| | | | |
|--------------------------------|---------|--------------------|----------|
| 6' Allure Access Contour Bench | AL1980P | 33"H x 26"W x 72"L | 169 lbs. |
| 6' Allure Access Flat Bench | AL1990P | 17"H x 20"W x 72"L | 105 lbs. |



Bistro Table L1400
shown on page 33



Flat Bench AL1990P — shown in textured charcoal and textured pewter



Recycler AE2645RCT
shown on page 15



Contour Bench AL1980WB — shown in oxford brown and textured pewter



Flat Bench AL1990W



Receptacle BH1835R shown on page 31

FEATURES

Steel and aluminum components are protected with a powder coated finish to resist rusting. All recycled plastic planks are 95% recycled content by weight. Mature exterior grade bamboo planks are finished with a UV-resistant stain. Wall mount style on the top of a wall. Available in colors shown on page 92.

Wall Mount Benches *Bamboo, recycled plastic or aluminum planks with aluminum accents, steel frame and cast aluminum ends.*

| | | | |
|---|----------|--------------------|----------|
| 6' Bamboo Contour Bench, Wall Mount | AL1980WB | 20"H x 24"W x 73"L | 91 lbs. |
| 6' Bamboo Flat Bench, Wall Mount | AL1990WB | 4"H x 19"W x 73"L | 51 lbs. |
| 6' Recycled Plastic Contour Bench, Wall Mount | AL1980WR | 20"H x 24"W x 73"L | 105 lbs. |
| 6' Recycled Plastic Flat Bench, Wall Mount | AL1990WR | 4"H x 19"W x 73"L | 57 lbs. |
| 6' Aluminum Contour Bench, Wall Mount | AL1980W | 20"H x 24"W x 73"L | 88 lbs. |
| 6' Aluminum Flat Bench, Wall Mount | AL1990W | 4"H x 19"W x 73"L | 50 lbs. |

FEATURES

Cast aluminum protected with a powder coated finish to resist rusting. Surface mount style. Available in colors shown on page 92.

Bike Rack *Rustproof, cast aluminum construction.*

| | | | |
|--------------------|---------|-------------------|---------|
| Aluminum Bike Rack | AL19BR2 | 33"H x 5"W x 13"L | 14 lbs. |
|--------------------|---------|-------------------|---------|



Bike Rack AL19BR2 — shown in textured pewter

Exposition

Benches | Receptacles | Recyclers

Mid-century mod is on display in the curving contours of the Exposition collection. Laser-cut steel bench ends pair with ergonomic slat seating for the perfect blend of comfort and style.



Contour Bench LEXC6 and Receptacle LEX45 — shown in silver



Receptacle LEX45 — shown in textured bronze



Flat Bench LEXF6



Receptacle LEX33P



Receptacle LEX33

FEATURES

Seats are protected by the Fusion Advantage finish (see page 7 for details). Armrests, legs and receptacle are protected with a powder coated finish to resist rusting. Benches and receptacle are portable/surface mount style. Available in colors shown on page 92.

Benches 10-gauge steel seat with steel armrests and legs.

| | | | |
|------------------|-------|--------------------|----------|
| 4' Contour Bench | LEXC4 | 33"H x 25"W x 51"L | 126 lbs. |
| 5' Contour Bench | LEXC5 | 33"H x 25"W x 63"L | 142 lbs. |
| 6' Contour Bench | LEXC6 | 33"H x 25"W x 75"L | 159 lbs. |
| 4' Flat Bench | LEXF4 | 18"H x 21"W x 50"L | 74 lbs. |
| 5' Flat Bench | LEXF5 | 18"H x 21"W x 62"L | 96 lbs. |
| 6' Flat Bench | LEXF6 | 18"H x 21"W x 74"L | 114 lbs. |

Receptacles/Recyclers 12-gauge steel; side opening door. See decal options at anovafurnishings.com/exposition. Receptacles are patented.

| | | | |
|--|-------|--------------------|----------|
| 22 Gallon Receptacle/Recycler with Top and Liner | LEX22 | 39"H x 25"W x 19"D | 132 lbs. |
| 33 Gallon Receptacle/Recycler with Top and Liner | LEX33 | 42"H x 28"W x 20"D | 171 lbs. |
| 45 Gallon Receptacle/Recycler with Top and Liner | LEX45 | 44"H x 30"W x 24"D | 198 lbs. |
| 70 Gallon Receptacle/Recycler with Top and Liner | LEX70 | 45"H x 40"W x 29"D | 250 lbs. |

Plastic Receptacles/Recyclers 100% marine-grade, high density, scratch-resistant polyethylene construction with UV inhibitors; side opening door. See decal options at anovafurnishings.com/exposition. Receptacles are patented.

| | | | |
|--|--------|--------------------|---------|
| 22 Gallon Plastic Receptacle/Recycler with Top and Liner | LEX22P | 39"H x 26"W x 19"D | 52 lbs. |
| 33 Gallon Plastic Receptacle/Recycler with Top and Liner | LEX33P | 42"H x 29"W x 21"D | 67 lbs. |



Receptacle/Recycler LEX70

Beacon Hill

Tables | Benches | Receptacles | Recyclers | Planters

Sustainable style is expertly showcased in the stunning Beacon Hill Collection. Contemporary steel accents complement your choice of premium bamboo planks or maintenance-free recycled plastic lumber.



Table BH1840B — shown in honey and textured pewter

FEATURES

Steel, aluminum and cast iron components are protected with a powder coated finish to resist rusting. All recycled plastic planks are 95% recycled content by weight. Mature exterior grade bamboo planks are finished with a UV-resistant stain. Benches and tables are portable/surface mount style. Bistro tables, ADA tables and pedestal chairs are surface mount only. Available in colors shown on page 92.

Tables *Bamboo or recycled plastic planks with aluminum accents and steel frame. 42" sq. table top.*

| | | | |
|---|----------|---------------|----------|
| 4-Seat Bamboo Table with Contour Swivel Seats | BH1840SB | 37"H x 92"Sq. | 358 lbs. |
| 4-Seat Bamboo Table with Contour Seats | BH1840B | 36"H x 92"Sq. | 345 lbs. |
| 4-Seat Bamboo Table with Flat Seats | BH1841B | 30"H x 87"Sq. | 277 lbs. |

| | | | |
|---|----------|---------------|----------|
| 4-Seat Recycled Plastic Table with Contour Swivel Seats | BH1840SR | 37"H x 92"Sq. | 391 lbs. |
| 4-Seat Recycled Plastic Table with Contour Seats | BH1840R | 36"H x 92"Sq. | 378 lbs. |
| 4-Seat Recycled Plastic Table with Flat Seats | BH1841R | 30"H x 87"Sq. | 296 lbs. |

ADA Tables *Bamboo or recycled plastic planks with aluminum accents and steel frame. 42" sq. table top.*

| | | | |
|---|----------|--------------------|----------|
| 3-Seat Bamboo Table with Contour Swivel Seats | BH1830SB | 37"H x 67"W x 92"L | 303 lbs. |
| 3-Seat Bamboo Table with Contour Seats | BH1830B | 36"H x 67"W x 92"L | 293 lbs. |
| 3-Seat Bamboo Table with Flat Seats | BH1831B | 30"H x 64"W x 87"L | 242 lbs. |

| | | | |
|---|----------|--------------------|----------|
| 3-Seat Recycled Plastic Table with Contour Swivel Seats | BH1830SR | 37"H x 67"W x 92"L | 312 lbs. |
| 3-Seat Recycled Plastic Table with Contour Seats | BH1830R | 36"H x 67"W x 92"L | 303 lbs. |
| 3-Seat Recycled Plastic Table with Flat Seats | BH1831R | 30"H x 64"W x 87"L | 263 lbs. |

Bistro Tables *Bamboo or recycled plastic planks with aluminum accents and steel frame. 34" sq. table top.*

| | | | |
|---|----------|--------------------|----------|
| 2-Seat Bamboo Table with Contour Swivel Seats | BH1801SB | 37"H x 34"W x 82"L | 201 lbs. |
| 2-Seat Bamboo Table with Contour Seats | BH1801B | 36"H x 34"W x 82"L | 195 lbs. |
| 2-Seat Bamboo Table with Flat Seats | BH1800B | 30"H x 34"W x 77"L | 170 lbs. |

| | | | |
|---|----------|--------------------|----------|
| 2-Seat Recycled Plastic Table with Contour Swivel Seats | BH1801SR | 37"H x 34"W x 82"L | 221 lbs. |
| 2-Seat Recycled Plastic Table with Contour Seats | BH1801R | 36"H x 34"W x 82"L | 215 lbs. |
| 2-Seat Recycled Plastic Table with Flat Seats | BH1800R | 30"H x 34"W x 77"L | 184 lbs. |

Lucaya Umbrellas *Sunbrella, marine-grade, acrylic fabric with aluminum pole. Standard and premium umbrella fabric colors shown on page 93. Pole colors shown at anovafurnishings.com/patterns.*

| | | | |
|-------------------------------------|----------|---------------|---------|
| 9' Diameter - Standard Color Fabric | 9LPU-CSC | 87"H x 9'Dia. | 26 lbs. |
| 9' Diameter - Premium Color Fabric | 9LPU-CPC | 87"H x 9'Dia. | 26 lbs. |
| U-Brace Table Brace | UBRACE | ½"H x 1½"D. | 1 lb. |



Table BH1840B



Table BH1841B



Bistro Table BH1801B



ADA Table BH1831B



Bistro Table BH1800B — shown in honey and textured pewter



Lucaya Umbrella 9LPU-CSC; see details at anovafurnishings.com



Contour Bench BH1880B and Planter BH1850PB —shown in honey and textured pewter



Flat Bench BH1890B



Pedestal Flat Chair BH1810B

Benches Bamboo or recycled plastic planks with aluminum accents, steel frame and cast iron ends. Patent pending.

| | | | |
|-------------------------|---------|--------------------|----------|
| 4' Bamboo Contour Bench | BH1884B | 34"H x 25"W x 53"L | 159 lbs. |
| 6' Bamboo Contour Bench | BH1880B | 34"H x 25"W x 77"L | 188 lbs. |
| 4' Bamboo Flat Bench | BH1894B | 23"H x 24"W x 53"L | 129 lbs. |
| 6' Bamboo Flat Bench | BH1890B | 23"H x 24"W x 77"L | 148 lbs. |

| | | | |
|-----------------------------------|---------|--------------------|----------|
| 4' Recycled Plastic Contour Bench | BH1884R | 34"H x 25"W x 53"L | 169 lbs. |
| 6' Recycled Plastic Contour Bench | BH1880R | 34"H x 25"W x 77"L | 204 lbs. |
| 4' Recycled Plastic Flat Bench | BH1894R | 23"H x 24"W x 53"L | 134 lbs. |
| 6' Recycled Plastic Flat Bench | BH1890R | 23"H x 24"W x 77"L | 155 lbs. |

Pedestal chairs Bamboo or recycled plastic planks with aluminum accents, steel frame and 2 $\frac{3}{8}$ " O.D. pedestal.

| | | | |
|--------------------------------|---------|--------------------|---------|
| Bamboo Flat Chair | BH1810B | 20"H x 21"W x 20"D | 41 lbs. |
| Bamboo Contour Chair | BH1811B | 36"H x 21"W x 23"D | 56 lbs. |
| Recycled Plastic Flat Chair | BH1810R | 20"H x 21"W x 20"D | 42 lbs. |
| Recycled Plastic Contour Chair | BH1811R | 36"H x 21"W x 23"D | 70 lbs. |



Receptacle BH1845RBT and Planter BH1825PR — shown in mahogany and textured pewter



Receptacle BH1835R



Receptacle/Recycler BH1870BBT

Receptacles *Bamboo or recycled plastic planks with steel frame. Planks available in your choice of vertical or horizontal orientation.*

| | | | |
|---|-----------|---------------|----------|
| 35 Gallon Bamboo Receptacle with Open Top and Liner | BH1835B | 32"H x 23"Sq. | 101 lbs. |
| 35 Gallon Bamboo Receptacle with Bonnet Top and Liner | BH1835BBT | 40"H x 23"Sq. | 114 lbs. |
| 45 Gallon Bamboo Receptacle with Open Top and Liner | BH1845B | 35"H x 24"Sq. | 102 lbs. |
| 45 Gallon Bamboo Receptacle with Bonnet Top and Liner | BH1845BBT | 43"H x 24"Sq. | 116 lbs. |

| | | | |
|---|-----------|---------------|----------|
| 35 Gallon Recycled Plastic Receptacle with Open Top and Liner | BH1835R | 32"H x 23"Sq. | 118 lbs. |
| 35 Gallon Recycled Plastic Receptacle with Bonnet Top and Liner | BH1835RBT | 40"H x 23"Sq. | 130 lbs. |
| 45 Gallon Recycled Plastic Receptacle with Open Top and Liner | BH1845R | 35"H x 24"Sq. | 129 lbs. |
| 45 Gallon Recycled Plastic Receptacle with Bonnet Top and Liner | BH1845RBT | 43"H x 24"Sq. | 142 lbs. |

Double Receptacles/Recyclers *Bamboo or recycled plastic planks with steel frame. Planks available in your choice of vertical or horizontal orientation.*

| | | | |
|---|-----------|--------------------|----------|
| 70 Gallon Bamboo with Open Top and Liners | BH1870B | 32"H x 23"W x 42"L | 163 lbs. |
| 70 Gallon Bamboo with Bonnet Top and Liners | BH1870BBT | 40"H x 23"W x 42"L | 190 lbs. |

| | | | |
|---|-----------|--------------------|----------|
| 70 Gallon Recycled Plastic with Open Top and Liners | BH1870R | 32"H x 23"W x 42"L | 188 lbs. |
| 70 Gallon Recycled Plastic with Bonnet Top and Liners | BH1870RBT | 40"H x 23"W x 42"L | 215 lbs. |

Planters *Bamboo or recycled plastic planks with steel frame. Planks available in your choice of vertical or horizontal orientation.*

| | | | |
|--|----------|--------------------|----------|
| 25 Gallon Bamboo Planter with Top and Liner | BH1825PB | 21"H x 23"Sq. | 60 lbs. |
| 50 Gallon Bamboo Planter with Top and Liners | BH1850PB | 21"H x 23"W x 42"L | 127 lbs. |

| | | | |
|--|----------|--------------------|----------|
| 25 Gallon Recycled Plastic Planter with Top and Liner | BH1825PR | 21"H x 23"Sq. | 80 lbs. |
| 50 Gallon Recycled Plastic Planter with Top and Liners | BH1850PR | 21"H x 23"W x 42"L | 143 lbs. |



Planter BH1825PB



Planter BH1850PB

Latitude

Tables | Benches | Receptacles | Recyclers | Planters

Choose Latitude for clean lines, modern finishing, and ergonomic comfort. This collection features several bench options, large-capacity receptacles, and fresh table designs to complement any site.



Table L1447S and Table L1445 — shown in black; Umbrellas 9LPU-CSC shown in black and natural



Bistro Table L1401S — shown in black

FEATURES

All seating, table tops and receptacle bases are protected by the Fusion Advantage finish (see page 7 for details). Bench ends, legs and armrests, chair pedestal, table frames and receptacle tops are protected with a powder coated finish to resist rusting. Benches and tables are portable/surface mount style. Bistro tables, ADA tables and pedestal chairs are surface mount only. Available in colors shown on page 92.

Tables 12-gauge steel seating and 46" diameter table top with steel frame. (Tables with contour seats also available in fixed seat style at anovafurnishings.com/latitude.)

| | | | |
|--|--------|--------------------|----------|
| 4-Seat Table with Contour Swivel Seats | L1449S | 35"H x 93"Dia. | 327 lbs. |
| 5-Seat Table with Contour Swivel Seats | L1447S | 35"H x 94"Dia. | 385 lbs. |
| 6-Seat Table with Contour Swivel Seats | L1446S | 35"H x 93"Dia. | 436 lbs. |
| 4-Seat Table with Flat Seats | L1448 | 30"H x 85"Dia. | 274 lbs. |
| 5-Seat Table with Flat Seats | L1445 | 30"H x 87"Dia. | 319 lbs. |
| 6-Seat Table with Flat Seats | L1444 | 30"H x 85"Dia. | 356 lbs. |
| 3-Seat ADA Table with Contour Swivel Seats | L1451S | 36"H x 70"W x 93"L | 289 lbs. |
| 3-Seat ADA Table with Flat Seats | L1450 | 30"H x 66"W x 85"L | 249 lbs. |

Bistro Tables 12-gauge steel seating and 36" diameter table top with steel frame.

| | | | |
|--|--------|--------------------|----------|
| 2-Seat Table with Contour Swivel Seats | L1401S | 36"H x 36"W x 84"L | 204 lbs. |
| 2-Seat Table with Contour Seats | L1401 | 35"H x 36"W x 83"L | 197 lbs. |
| 2-Seat Table with Flat Seats | L1400 | 30"H x 36"W x 75"L | 177 lbs. |

Lucaya Umbrellas Sunbrella marine-grade, acrylic fabric with aluminum pole shown on opposite page. Standard and premium fabric colors shown on page 93. Pole colors shown at anovafurnishings.com/patterns.

| | | | |
|-------------------------------------|----------|---------------|---------|
| 9' Diameter - Standard Color Fabric | 9LPU-CSC | 87"H x 9'Dia. | 26 lbs. |
| 9' Diameter - Premium Color Fabric | 9LPU-CPC | 87"H x 9'Dia. | 26 lbs. |
| U-Brace Table Brace | UBRACE | ½"H x 1½"l.D. | 1 lb. |



Table L1449S



Table L1444



ADA Table L1451S



Bistro Table L1401



Bistro Table L1400



Contour Bench L1441 and Receptacle L1439 — shown in navy and silver



Contour Bench L1441P

Benches 12-gauge steel seat with formed steel armrests and cast iron ends.

| | | | |
|---------------------------------------|--------|--------------------|----------|
| 4' Contour Bench | L1440 | 34"H x 25"W x 48"L | 102 lbs. |
| 6' Contour Bench | L1441 | 34"H x 25"W x 72"L | 133 lbs. |
| 4' Contour Bench with Armrests | L1440A | 34"H x 25"W x 48"L | 109 lbs. |
| 6' Contour Bench with Armrests | L1441A | 34"H x 25"W x 72"L | 140 lbs. |
| 6' Contour Bench with Divided Seating | L1441P | 34"H x 25"W x 72"L | 148 lbs. |
| 4' Flat Bench | L1442 | 18"H x 24"W x 48"L | 91 lbs. |
| 6' Flat Bench | L1443 | 18"H x 24"W x 72"L | 121 lbs. |



Flat Bench L1443

Pedestal Chairs 12-gauge steel seating with 2 $\frac{3}{8}$ " O.D. steel pedestal.

| | | | |
|---------------|-------|--------------------|---------|
| Flat Chair | L1410 | 19"H x 21"W x 18"D | 34 lbs. |
| Contour Chair | L1411 | 35"H x 21"W x 22"D | 43 lbs. |



Pedestal Flat Chair L1410



Contour Bench L1441A — shown in black



Receptacle L2040 — shown in textured bronze

Receptacles 16- and 40-gallon bases: 12-gauge steel; 55-gallon base: 14-gauge steel; steel tops.

| | | | |
|---|---------|----------------|----------|
| 16 Gallon Receptacle with Contour Top and Liner | L1438 | 25"H x 17"Dia. | 57 lbs. |
| 40 Gallon Receptacle with Contour Top and Liner | L1439 | 34"H x 24"Dia. | 105 lbs. |
| 40 Gallon French Door Receptacle with Built-In Bonnet Top and Liner | L2040 | 43"H x 25"Dia. | 162 lbs. |
| 40 Gallon French Door Receptacle with Built-In Bonnet Ash Top and Liner | L2040AT | 43"H x 25"Dia. | 169 lbs. |
| 55 Gallon Receptacle with Bonnet Top and Liner | L2055 | 46"H x 28"Dia. | 173 lbs. |
| 55 Gallon Receptacle with Bonnet Ash Top and Liner | L2055A | 46"H x 28"Dia. | 178 lbs. |



Receptacle L1439 and Receptacle 1438



Receptacle L2040



Receptacle L2055A



Receptacle L2055

Cosmopolitan

Tables | Benches

Eye-catching patterns and thoughtful seat design are on display with the Cosmopolitan Collection. Sophisticatedly modern and exceptionally versatile, these inviting tables, benches and pedestal chairs are available in a variety of seat configurations.



Table L1760S — shown in pine and textured bronze; Umbrella 9LPU shown in linen; Umbrella Base UB15



Contour Bench L1770 — shown in black

FEATURES

All seating and table tops are protected by the Fusion Advantage finish (see page 7 for details). Bench ends, chair pedestal and table frames are protected with a powder coated finish to resist rusting. Benches and tables are portable/surface mount style. Bistro tables and pedestal chairs are surface mount only. Available in colors shown on page 92.

Tables 12-gauge steel seating and table top with steel frame. 46" diameter table top. Four and six seat tables are patented.

| | | | |
|--|--------|----------------|----------|
| 4-Seat ADA Table with Contour Swivel Seats | L1740S | 36"H x 92"Dia. | 322 lbs. |
| 6-Seat Table with Contour Swivel Seats | L1760S | 36"H x 95"Dia. | 422 lbs. |
| 4-Seat ADA Table with Contour Seats | L1740 | 35"H x 92"Dia. | 309 lbs. |
| 6-Seat Table with Contour Seats | L1760 | 35"H x 95"Dia. | 402 lbs. |
| 4-Seat ADA Table with Flat Seats | L1741 | 30"H x 81"Dia. | 253 lbs. |
| 6-Seat Table with Flat Seats | L1761 | 30"H x 82"Dia. | 324 lbs. |

Bistro Tables 12-gauge steel seating and table top with steel frame. 36" diameter table top.

| | | | |
|--|--------|--------------------|----------|
| 2-Seat Table with Contour Swivel Seats | L1701S | 36"H x 36"W x 87"L | 209 lbs. |
| 2-Seat Table with Contour Seats | L1701 | 35"H x 36"W x 87"L | 202 lbs. |
| 2-Seat Table with Flat Seats | L1700 | 30H" x 36"W x 74"L | 175 lbs. |

Benches 10-gauge steel seat with steel armrests and legs.

| | | | |
|--------------------------------|-------|--------------------|----------|
| 4' Contour Bench | L1775 | 33"H x 25"W x 51"L | 119 lbs. |
| 5' Contour Bench | L1773 | 33"H x 25"W x 63"L | 135 lbs. |
| 6' Contour Bench | L1771 | 33"H x 25"W x 74"L | 152 lbs. |
| 4' Contour Bench with Armrests | L1774 | 33"H x 25"W x 51"L | 126 lbs. |
| 5' Contour Bench with Armrests | L1772 | 33"H x 25"W x 63"L | 142 lbs. |
| 6' Contour Bench with Armrests | L1770 | 33"H x 25"W x 75"L | 159 lbs. |
| 4' Flat Bench | L1784 | 18"H x 21"W x 50"L | 74 lbs. |
| 5' Flat Bench | L1782 | 18"H x 21"W x 62"L | 88 lbs. |
| 6' Flat Bench | L1780 | 18"H x 21"W x 74"L | 96 lbs. |

Pedestal Chairs 12-gauge steel seating with 2 $\frac{3}{8}$ " O.D. steel pedestal.

| | | | |
|---------------|-------|--------------------|---------|
| Flat Chair | L1710 | 19"H x 20"W x 17"D | 34 lbs. |
| Contour Chair | L1711 | 35"H x 20"W x 24"D | 47 lbs. |



Flat Bench L1780



Table L1761



ADA Table L1740S



Bistro Table L1701S



Pedestal Flat Chair L1710

Madison

Table | Benches | Receptacles | Recyclers

Minimal matte steel warms up with the texture of fine-quality bamboo or recycled plastic lumber. Our ergonomic construction offers comfort without sacrificing aesthetics.



Contour Bench LBMC6, Table LBMT4 and Receptacle TL35DT — shown in oxford brown and textured pewter

FEATURES

All steel components are protected with a powder coated finish to resist rusting. All recycled plastic planks are 95% recycled content by weight. Mature exterior grade bamboo planks are finished with a UV-resistant stain. Benches are portable/surface mount style. Available in colors shown on page 92.

Tables *Bamboo or recycled plastic planks with steel frame.*

| | | | |
|--|--------|--------------------|----------|
| 4' Bamboo Conversation Table | LBMT4 | 19"H x 48"W x 52"L | 217 lbs. |
| 4' Recycled Plastic Conversation Table | RCPMT4 | 19"H x 48"W x 52"L | 247 lbs. |

Benches *Bamboo or recycled plastic planks with steel frame.*

| | | | |
|-----------------------------------|--------|--------------------|----------|
| 6' Bamboo Contour Bench | LBMC6 | 35"H x 28"W x 79"L | 214 lbs. |
| 6' Recycled Plastic Contour Bench | RCPMC6 | 35"H x 28"W x 79"L | 244 lbs. |
| 6' Bamboo Flat Bench | LBMF6 | 19"H x 20"W x 72"L | 108 lbs. |
| 6' Recycled Plastic Flat Bench | RCPMF6 | 19"H x 20"W x 72"L | 123 lbs. |

Bamboo Receptacles *Bamboo planks and steel side panels/frame with steel top.*

| | | | |
|--|---------|----------------|---------|
| 35 Gallon Receptacle with Open Top and Liner | TL35OT | 32"H x 24"Dia. | 73 lbs. |
| 35 Gallon Receptacle with Ash/Trash Top and Liner | TL35AT | 32"H x 24"Dia. | 66 lbs. |
| 35 Gallon Receptacle with Bonnet Ash Top and Liner | TL35BTA | 40"H x 24"Dia. | 76 lbs. |
| 35 Gallon Receptacle with Open Hood Top and Liner | TL35DT | 39"H x 24"Dia. | 65 lbs. |
| 35 Gallon Receptacle with Bonnet Top and Liner | TL35BT | 40"H x 24"Dia. | 69 lbs. |
| 35 Gallon Receptacle with Visor Hood Top and Liner | TL35VBT | 39"H x 24"Dia. | 68 lbs. |

Bamboo Recyclers *Bamboo planks and steel side panels/frame with steel top. (See decal options at anovafurnishings.com/madison.)*

| | | | |
|--|---------|----------------|---------|
| 35 Gallon Receptacle with Dome Recycler Top, Decals and Liner | TL35DRT | 39"H x 24"Dia. | 70 lbs. |
| 35 Gallon Receptacle with Visor Recycler Top, Decals and Liner | TL35VRT | 39"H x 24"Dia. | 70 lbs. |

Recycled Plastic Receptacles *Recycled plastic planks and steel side panels/frame with steel top.*

| | | | |
|--|---------|----------------|---------|
| 35 Gallon Receptacle with Open Top and Liner | TR35OT | 32"H x 24"Dia. | 73 lbs. |
| 35 Gallon Receptacle with Ash/Trash Top and Liner | TR35AT | 32"H x 24"Dia. | 79 lbs. |
| 35 Gallon Receptacle with Bonnet Ash Top and Liner | TR35BTA | 40"H x 24"Dia. | 89 lbs. |
| 35 Gallon Receptacle with Open Hood Top and Liner | TR35DT | 39"H x 24"Dia. | 78 lbs. |
| 35 Gallon Receptacle with Bonnet Top and Liner | TR35BT | 40"H x 24"Dia. | 82 lbs. |
| 35 Gallon Receptacle with Visor Hood Top and Liner | TR35VBT | 39"H x 24"Dia. | 81 lbs. |

Recycled Plastic Recyclers *Recycled plastic planks and steel side panels/frame with steel top. (See decal options at anovafurnishings.com/madison.)*

| | | | |
|--|---------|----------------|---------|
| 35 Gallon Receptacle with Dome Recycler Top, Decals and Liner | TR35DRT | 39"H x 24"Dia. | 83 lbs. |
| 35 Gallon Receptacle with Visor Recycler Top, Decals and Liner | TR35VRT | 39"H x 24"Dia. | 83 lbs. |



Flat Bench LBMF6



Receptacle TL35OT



Receptacle TL35DT



Recycler TL35DRT

Metrix

Benches | Receptacles | Recyclers

Straight lines, crisp angles and comfortable design make the Metrix Collection the ideal solution for your modern space.



Location complements of Mercy Hospital, Joplin, MO.

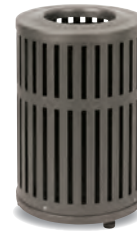
Receptacle L2009 — shown in textured bronze



Contour Bench L2016 — shown in pine



Flat Bench L2014



Receptacle L2008



Receptacle L2019



Recycler L2020A



Receptacle L2006

FEATURES

All steel components are protected with a powder coated finish to resist rusting. Benches are portable/surface mount style. Available in colors shown on page 92.

Benches 14-gauge steel seat and back with 12-gauge steel ends.

| | | | |
|------------------|-------|--------------------|----------|
| 4' Contour Bench | L2015 | 35"H x 25"W x 48"L | 121 lbs. |
| 5' Contour Bench | L2010 | 35"H x 25"W x 60"L | 143 lbs. |
| 6' Contour Bench | L2016 | 35"H x 25"W x 72"L | 164 lbs. |
| 4' Flat Bench | L2012 | 18"H x 21"W x 48"L | 77 lbs. |
| 5' Flat Bench | L2013 | 18"H x 21"W x 60"L | 91 lbs. |
| 6' Flat Bench | L2014 | 18"H x 21"W x 72"L | 105 lbs. |

Receptacles/Recyclers 16-gallon base: 12-gauge steel; 40- and 50-gallon base: 10-gauge steel. Steel receptacle/recycler tops. See decal options at anovafurnishings.com/metrix.

| | | | |
|---|--------|----------------|----------|
| 16 Gallon Receptacle with Contour Top and Liner | L2008 | 27"H x 17"Dia. | 46 lbs. |
| 40 Gallon Receptacle with Contour Top and Liner | L2009 | 44"H x 24"Dia. | 126 lbs. |
| 40 Gallon Receptacle with Ashtray Top, Side Door and Liner | L2007 | 44"H x 24"Dia. | 131 lbs. |
| 40 Gallon Receptacle with Dual Openings, Side Door and Liner | L2019 | 44"H x 24"Dia. | 126 lbs. |
| 40 Gallon Receptacle with Ashtray Top, Dual Openings, Side Door and Liner | L2019A | 44"H x 24"Dia. | 131 lbs. |
| 40 Gallon Recycler with Dual Openings, Side Door and Liner | L2020 | 44"H x 24"Dia. | 126 lbs. |
| 40 Gallon Recycler with Ashtray Top, Dual Openings, Side Door and Liner | L2020A | 44"H x 24"Dia. | 131 lbs. |
| 50 Gallon Receptacle with Contour Top, Side Door and Liner | L2006 | 44"H x 24"Dia. | 136 lbs. |

Newcastle

Benches

Gracefully minimal and surprisingly strong, the Newcastle bench provides the right balance of comfort and stability.



Contour Bench LNC6 — shown in textured charcoal and silver; Coordinating receptacle L1439 shown on page 35



Flat Bench LNF6 — shown in black and textured pewter

FEATURES

Seat is protected by the Fusion Advantage finish (see page 7 for details). Ends are protected with a powder coated finish to resist rusting. Portable/surface mount style. Available in colors shown on page 92.

Benches 10-gauge steel seat with steel ends.

| | | | |
|------------------|------|--------------------|----------|
| 4' Contour Bench | LNC4 | 34"H x 25"W x 54"L | 149 lbs. |
| 6' Contour Bench | LNC6 | 34"H x 25"W x 79"L | 168 lbs. |
| 4' Flat Bench | LNF4 | 24"H x 21"W x 54"L | 116 lbs. |
| 6' Flat Bench | LNF6 | 24"H x 21"W x 78"L | 137 lbs. |



Receptacle L1438 shown on page 35



Receptacle L1439 shown on page 35



Table L1444 shown on page 33



Bike Rack CIRCLEBR shown on page 53

Alliance

Bench

Collaboratively designed by Anova and Arcturis, the aptly named Alliance bench combines environmentally conscious seating with striking artistic form. Arcturis, a St. Louis-based architectural and design firm founded in 1977, specializes in building environments that inspire and serve people.



Flat Bench RCPAF6 — shown in mahogany and textured pewter; Coordinating receptacle TR35BT shown on page 39



Flat Bench LBAF6 — shown in honey and textured pewter; Coordinating receptacle TL350T shown on page 39

FEATURES

All steel components are protected with a powder coated finish to resist rusting. All recycled plastic planks are 95% recycled content by weight. Mature exterior grade bamboo planks are finished with a UV-resistant stain. Portable/surface mount style. Available in colors shown on page 92.

Bench *Bamboo or recycled plastic planks with steel frame and legs.*

| | | | |
|--------------------------------|--------|--------------------|----------|
| 6' Bamboo Flat Bench | LBAF6 | 20"H x 22"W x 73"L | 193 lbs. |
| 6' Recycled Plastic Flat Bench | RCPAF6 | 20"H x 22"W x 73"L | 212 lbs. |



Planter BH1825PB shown on page 31

Element

Benches | Receptacles | Planters

Curbside appeal is on demand with Element's parquet, embossed, or oval-patterned steel. Mix and match with these powder coated benches, receptacles, and planters.



Contour Bench M2016 and Receptacle E30TPOT — shown in textured black and silver



Receptacle E48TPBT and Receptacle E20TPAC — shown in textured bronze



Flat Bench with Armrests M2026



Flat Bench M2006



Receptacle E30TPCT



Receptacle E48TPHT



Planter MPLANTER

FEATURES

All steel components are protected with a powder coated finish to resist rusting. Steel patterns available in raised embossed, oval punched or parquet punched options. Bench is portable/surface mount. Available in colors and steel patterns (embossed, oval and parquet) shown on pages 92-93.

Benches 14-gauge steel seat with 12-gauge steel frame (in oval or parquet pattern only).

| | | | |
|-----------------------------|-------|--------------------|----------|
| 6' Contour Bench | M2016 | 35"H × 25"W × 72"L | 134 lbs. |
| 6' Flat Bench | M2006 | 18"H × 21"W × 72"L | 90 lbs. |
| 6' Flat Bench with Armrests | M2026 | 25"H × 21"W × 72"L | 101 lbs. |

Receptacles and Planter 14-gauge steel panels with aluminum frame and top. Push door, ash cover and flat open tops are polyethylene. (Additional 20-, 30- and 48-gallon styles available at anovafurnishings.com/element.)

| | | | |
|--|----------|---------------|----------|
| 20 Gallon Receptacle with Ash Cover Top and Liner | E20TPAC | 35"H × 18"Sq. | 68 lbs. |
| 30 Gallon Receptacle with Bonnet Ash Top and Liner | E30TPABT | 37"H × 18"Sq. | 69 lbs. |
| 30 Gallon Receptacle with Bonnet Top and Liner | E30TPBT | 37"H × 18"Sq. | 62 lbs. |
| 30 Gallon Receptacle with Curved Top and Liner | E30TPCT | 39"H × 18"Sq. | 62 lbs. |
| 30 Gallon Receptacle with Push Door Top and Liner | E30TPHT | 41"H × 18"Sq. | 60 lbs. |
| 30 Gallon Receptacle with Flat Open Top and Liner | E30TPOT | 31"H × 18"Sq. | 59 lbs. |
| 32 Gallon Receptacle with Ash Cover Top and Liner | E32TPAC | 37"H × 24"Sq. | 101 lbs. |
| 48 Gallon Receptacle with Bonnet Ash Top and Liner | E48TPABT | 39"H × 24"Sq. | 103 lbs. |
| 48 Gallon Receptacle with Bonnet Top and Liner | E48TPBT | 39"H × 24"Sq. | 99 lbs. |
| 48 Gallon Receptacle with Curved Top and Liner | E48TPCT | 41"H × 24"Sq. | 99 lbs. |
| 48 Gallon Receptacle with Push Door Top and Liner | E48TPHT | 43"H × 26"Sq. | 99 lbs. |
| Planter with Liner | MPLANTER | 18"H × 18"Sq. | 40 lbs. |

Upside

Receptacle | Recycler

The Upside indoor/outdoor receptacle and recycler present a sloping silhouette with ergonomic function. A removable tilt-out bin is framed by an impact-resistant enclosure. This means trash can easily be emptied from the bin without the need for vertical lifting or the hassles caused by moving parts on side-door style receptacles.



Receptacle PT4500 — shown in tan/chestnut, taupe and black



Recycler PT4500R — shown in taupe



Receptacle PT4500



Hold Down Kit A1021

FEATURES

Removable tilt-out bin. Available in colors shown on page 93.

Receptacle/Recycler Rotomolded plastic. Recycler features molded-in recycling logo graphic.

| | | | |
|----------------------|---------|----------------|---------|
| 50 Gallon Receptacle | PT4500 | 45"H × 32"Dia. | 54 lbs. |
| 50 Gallon Recycler | PT4500R | 45"H × 32"Dia. | 54 lbs. |

Tuscany

Tables | Chairs

Tuscany tables and chairs sport a minimalist design that delivers maximum impact. Slim steel accents complement your choice of premium bamboo planks or maintenance-free recycled plastic lumber.



Bistro Table T2237B and Chair T2235B — shown in honey and textured pewter



Bar Height Table T2247R and Bar Height Chair T2245R — shown in mahogany and textured pewter

FEATURES

Steel components are protected with a powder coated finish to resist rusting. All recycled plastic planks are 95% recycled content by weight. Mature exterior grade bamboo planks are finished with a UV-resistant stain. Available in colors shown on page 92. *ADA-compliant.

Tables Bamboo or recycled plastic planks with steel frame. 34"W x 36"L table top.

| | | | |
|------------------------------------|--------|--------------------|---------|
| Bamboo Bar Height table* | T2247B | 40"H x 34"W x 36"L | 63 lbs. |
| Bamboo Bistro table | T2237B | 31"H x 34"W x 36"L | 58 lbs. |
| Recycled Plastic Bar Height table* | T2247R | 40"H x 34"W x 36"L | 71 lbs. |
| Recycled Plastic Bistro table | T2237R | 31"H x 34"W x 36"L | 66 lbs. |

Chairs Bamboo or recycled plastic planks with steel frame.

| | | | |
|-----------------------------------|--------|--------------------|---------|
| Bamboo Bar Height Chair | T2245B | 43"H x 20"W x 23"D | 35 lbs. |
| Bamboo Chair | T2235B | 33"H x 20"W x 24"D | 26 lbs. |
| Recycled Plastic Bar Height Chair | T2245R | 43"H x 20"W x 23"D | 38 lbs. |
| Recycled Plastic Chair | T2235R | 33"H x 20"W x 24"D | 29 lbs. |



Receptacle TR35DT shown on page 39

Bike Racks

Modern

Our award-winning, contemporary designs are perfectly at home in any metropolitan environment.



Bike Rack LBCBR2 — shown in black



Location complements of Mercy Hospital, Joplin, MO.

Bike Rack CIRCLEBR — shown textured bronze; Tables and chairs shown on page 73

FEATURES

Two bike capacity. Steel components are protected with a powder coated finish to resist rusting. Premium quality stainless steel is highly resistant to salt corrosion, rusting, pitting and cracking. Cast aluminum components are rust-proof and 100% recyclable. Surface mount style. Available in colors shown on page 92.

Arch Bike Racks Available in stainless steel or powder coated steel.

| | | | |
|---|-------------|-------------------|---------|
| Bike Rack with Standard Medallion - Stainless Steel | LBCBR | 32"H x 6"W x 40"L | 40 lbs. |
| Bike Rack with Standard Medallion - Powder Coated Steel | LBCBR2 | 32"H x 6"W x 40"L | 40 lbs. |
| Bike Rack with Custom Medallion - Stainless Steel | LBCBR-CUST | 32"H x 6"W x 40"L | 40 lbs. |
| Bike Rack with Custom Medallion - Powder Coated Steel | LBCBR2-CUST | 32"H x 6"W x 40"L | 40 lbs. |

Circle Bike Racks Available in stainless steel or powder coated steel.

| | | | |
|---------------------------------|------------|-------------------|---------|
| Bike Rack - Stainless Steel | CIRCLEBRS2 | 32"H x 6"W x 36"L | 35 lbs. |
| Bike Rack - Powder Coated Steel | CIRCLEBR | 32"H x 6"W x 36"L | 22 lbs. |

Allure Bike Rack Powder coated, rustproof cast aluminum.

| | | | |
|-----------|---------|-------------------|---------|
| Bike Rack | AL19BR2 | 33"H x 5"W x 13"L | 14 lbs. |
|-----------|---------|-------------------|---------|



Bike Rack AL19BR2 — shown in pewter

Park Lane

Benches

A modern take on a classic form, Park Lane benches are an enduring essential.



Contour Bench PL2480 — shown in textured charcoal and textured pewter



Flat Bench PL2490 and Contour Bench PL2480 — shown in pine and textured pewter;
Coordinating receptacle L1378BT shown on page 59



Table L1388S shown on page 57



Receptacle L1378CT shown on page 59



Planter L1386 shown on page 59

FEATURES

Heavy-gauge steel slat seats are protected by the patented Fusion Advantage finish (see page 7 for details). Steel and cast iron components are protected with a powder coated finish to resist rusting. Portable/surface mount style. Available in colors shown on page 92.

Benches 10-gauge steel slat seat with steel frame and cast iron ends. Patent pending.

| | | | |
|------------------|--------|--------------------|----------|
| 6' Contour Bench | PL2480 | 35"H x 25"W x 77"L | 205 lbs. |
| 6' Flat Bench | PL2490 | 23"H x 24"W x 77"L | 185 lbs. |

Rendezvous

Tables | Benches | Receptacles | Recyclers | Planters

Superb details, timeless design, exceptional durability:
It's no wonder the Rendezvous Collection is a best seller.



Table L1392S — shown in textured bronze



Table L1393S — shown in silver; Umbrella 9LPU-CSC — shown in turquoise



Table L1388S



Table L1390



ADA Table L1395S



Bistro Table L1301



Bistro Table L1300

FEATURES

All seating, table tops and receptacle bases are protected by the Fusion Advantage finish (see page 7 for details). Bench ends, legs and armrests, chair pedestal, table frames and receptacle tops are protected with a powder coated finish to resist rusting. Benches and tables are portable/surface mount style. Bistro tables, ADA tables and pedestal chairs are surface mount only. Available in colors shown on page 92.

Tables 12-gauge steel table top/seats with steel frame. 46" diameter table top. (Tables with contour seats are also available in fixed seat style at anovafurnishings.com/rendezvous.)

| | | | |
|--|--------|--------------------|----------|
| 4-Seat Table with Contour Swivel Seats | L1388S | 35"H x 97"Dia. | 327 lbs. |
| 5-Seat Table with Contour Swivel Seats | L1393S | 35"H x 96"Dia. | 388 lbs. |
| 6-Seat Table with Contour Swivel Seats | L1392S | 35"H x 97"Dia. | 434 lbs. |
| 4-Seat Table with Flat Seats | L1387 | 30"H x 83"Dia. | 270 lbs. |
| 5-Seat Table with Flat Seats | L1391 | 30"H x 85"Dia. | 309 lbs. |
| 6-Seat Table with Flat Seats | L1390 | 30"H x 83"Dia. | 348 lbs. |
| 3-Seat ADA Table with Contour Swivel Seats | L1395S | 35"H x 72"W x 97"L | 286 lbs. |
| 3-Seat ADA Table with Flat Seats | L1394 | 30"H x 65"W x 83"L | 243 lbs. |

Bistro Tables 12-gauge steel seating and table top with steel frame. 36" diameter table top.

| | | | |
|--|--------|--------------------|----------|
| 2-Seat Table with Contour Swivel Seats | L1301S | 35"H x 36"W x 87"L | 211 lbs. |
| 2-Seat Table with Contour Seats | L1301 | 35"H x 36"W x 87"L | 204 lbs. |
| 2-Seat Table with Flat Seats | L1300 | 30"H x 36"W x 73"L | 176 lbs. |

Lucaya Umbrellas Sunbrella marine-grade, acrylic fabric with aluminum pole. Standard and premium fabric colors shown on page 93. Pole colors shown at anovafurnishings.com.

| | | | |
|-------------------------------------|----------|---------------|---------|
| 9' Diameter - Standard Color Fabric | 9LPU-CSC | 87"H x 9'Dia. | 26 lbs. |
| 9' Diameter - Premium Color Fabric | 9LPU-CPC | 87"H x 9'Dia. | 26 lbs. |
| U-Brace Table Brace | UBRACE | ½"H x 1½"l.D. | 1 lb. |



Contour Bench L1360 and Planter L1386 — shown in black



Flat Bench L1371



Pedestal Flat Chair L1310

Benches 12-gauge steel seating with cast iron ends, legs and armrests.

| | | | |
|---|--------|---------------------|----------|
| 4' Contour Bench | L1361 | 33"H x 28"W x 52"L | 159 lbs. |
| 6' Contour Bench | L1360 | 33"H x 28"W x 76"L | 183 lbs. |
| 6' Contour Bench with Center Armrest | L1360A | 33"H x 28"W x 76"L | 193 lbs. |
| 8' Contour Bench with Center Armrest/Leg | L1364 | 33"H x 28"W x 100"L | 274 lbs. |
| 12' Contour Bench with Center Armrest/Leg | L1366 | 33"H x 28"W x 148"L | 323 lbs. |
| 12' Contour Bench with Divided Seating/Center Leg | L1366A | 33"H x 28"W x 148"L | 343 lbs. |

| | | | |
|--------------------------------|-------|---------------------|----------|
| 4' Flat Bench | L1370 | 19"H x 24"W x 52"L | 116 lbs. |
| 6' Flat Bench | L1371 | 19"H x 24"W x 76"L | 143 lbs. |
| 8' Flat Bench with Center Leg | L1374 | 19"H x 24"W x 100"L | 206 lbs. |
| 12' Flat Bench with Center Leg | L1375 | 19"H x 24"W x 148"L | 260 lbs. |

Pedestal Chairs 12-gauge steel seating with 2 3/8" O.D. steel pedestal.

| | | | |
|---------------|-------|--------------------|---------|
| Flat Chair | L1310 | 18"H x 20"W x 16"D | 34 lbs. |
| Contour Chair | L1311 | 34"H x 20"W x 25"D | 48 lbs. |



Receptacle L1383BT — shown in textured sandstone



Receptacle L13780H



Receptacle L1383AT



Receptacle L1380CT



Recycler L1382

Receptacles 12-gauge steel base with steel top. (Additional styles and custom options are available at anovafurnishings.com/rendezvous.)

| | | | |
|--|---------|----------------|----------|
| 32 Gallon Receptacle with Contour Top and Liner | L1378CT | 32"H x 28"Dia. | 89 lbs. |
| 32 Gallon Receptacle with Open Hood Top and Liner | L13780H | 39"H x 28"Dia. | 95 lbs. |
| 32 Gallon Receptacle with Bonnet Top and Liner | L1378BT | 39"H x 28"Dia. | 98 lbs. |
| 32 Gallon Receptacle with Bonnet Ash Top and Liner | L1378AT | 40"H x 28"Dia. | 105 lbs. |
| 40 Gallon Receptacle with Contour Top and Liner | L1383CT | 34"H x 28"Dia. | 92 lbs. |
| 40 Gallon Receptacle with Open Hood Top and Liner | L13830H | 42"H x 28"Dia. | 98 lbs. |
| 40 Gallon Receptacle with Bonnet Top and Liner | L1383BT | 43"H x 28"Dia. | 101 lbs. |
| 40 Gallon Receptacle with Bonnet Ash Top and Liner | L1383AT | 43"H x 28"Dia. | 108 lbs. |
| 55 Gallon Receptacle with Convex Top and Liner | L1380CT | 38"H x 32"Dia. | 145 lbs. |
| 55 Gallon Receptacle with Bonnet Top and Liner | L1380BT | 47"H x 32"Dia. | 154 lbs. |
| 55 Gallon Receptacle with Bonnet Ash Top and Liner | L1380AT | 47"H x 32"Dia. | 160 lbs. |

Rendezvous Recyclers 12-gauge steel base with steel top. (Additional styles and custom options are available at anovafurnishings.com/rendezvous.)

| | | | |
|---|---------|--------------------|----------|
| 69 Gallon Triple Recycler with Decals and Two 16 Gallon Liners Plus One 37 Gallon Liner | L1382 | 32"H x 50"W x 28"D | 138 lbs. |
| 69 Gallon Triple Recycler with Bonnet Top, Decals and Two 16 Gallon Liners Plus One 37 Gallon Liner | L1382BT | 40"H x 50"W x 28"D | 171 lbs. |

Rendezvous Planter 12-gauge steel.

| | | | |
|--------------------|-------|----------------|---------|
| Planter with Liner | L1386 | 24"H x 28"Dia. | 69 lbs. |
|--------------------|-------|----------------|---------|

Wainwright

Table | Benches | Receptacles

Inspired by early 20th-century Arts and Crafts style, the Wainwright Collection is updated for the new century with steel supports and recycled plastic lumber. Sturdy in design and construction, this collection is striking in a wide range of settings. Combine two styles of benches, a high-capacity receptacle, and an innovative table design for an earth-friendly, classic look.



Table RCPWT6 and Receptacle RCPWCT — shown in cedar and textured black



Bench RCPWC6 and Receptacle RCPWOT — shown in mahogany and textured black

FEATURES

All aluminum and steel components are protected with a powder coated finish to resist rusting. All recycled plastic planks are 95% recycled content by weight. Table and benches are portable/surface mount style. Available in colors shown on page 92.

Benches *Recycled plastic planks with steel frame and legs.*

| | | | |
|------------------|--------|--------------------|----------|
| 6' Contour Bench | RCPWC6 | 34"H x 25"W x 72"L | 204 lbs. |
| 6' Flat Bench | RCPWF6 | 18"H x 24"W x 72"L | 156 lbs. |

Table *Recycled plastic planks with steel frame and legs.*

| | | | |
|------------------------|--------|--------------------|----------|
| 6' Table | RCPWT6 | 29"H x 64"W x 72"L | 468 lbs. |
| ADA Table coming soon. | | | |

Receptacles *Recycled plastic planks with aluminum frame and steel top.*

| | | | |
|---|--------|---------------|----------|
| 45 Gallon Receptacle with Curve Top and Liner | RCPWCT | 41"H x 25"Sq. | 142 lbs. |
| 45 Gallon Receptacle with Open Top and Liner | RCPWOT | 33"H x 25"Sq. | 133 lbs. |



Bench RCPWF6

Horizon

Benches | Receptacle

Distinctive steel slats on the classic Horizon bench provide truly comfortable, contoured seating. The matching laser-cut receptacle has a decorative detail, lending elegance to any environment.



Bench L1506 and Receptacle L1535 — shown in black



Bench L1506 and Receptacle L1535 — shown in silver



Bench L1504



Bench L1508

FEATURES

Bench seats are protected by the Fusion Advantage finish (see page 7 for details). Bench ends, receptacle bases and tops are protected with a powder coated finish to resist rusting. Benches are portable/surface mount style. Available in colors shown on page 92.

Benches 12-gauge steel seat with cast iron ends.

| | | | |
|--|--------|---------------------|----------|
| 4' Contour Bench | L1504 | 33"H x 28"W x 52"L | 156 lbs. |
| 6' Contour Bench | L1506 | 33"H x 28"W x 76"L | 196 lbs. |
| 6' Contour Bench with Center Armrest | L1506A | 33"H x 28"W x 76"L | 206 lbs. |
| 8' Contour Bench with Center Armrest | L1508 | 33"H x 28"W x 100"L | 276 lbs. |
| 12' Contour Bench with Center Armrest | L1512 | 33"H x 28"W x 150"L | 354 lbs. |
| 12' Contour Bench with Divided Seating | L1512A | 33"H x 28"W x 150"L | 374 lbs. |

Receptacle 12-gauge steel base with steel top.

| | | | |
|---|-------|----------------|---------|
| 40 Gallon Receptacle with Contour Top and Liner | L1535 | 34"H x 24"Dia. | 77 lbs. |
|---|-------|----------------|---------|

Foundations



Picnic Table 81



Metro 84



Rally 70

Blend beauty and comfort in every public space with site furnishings from these two industry-leading portfolios.

TRADITIONAL 66 - 85

NATURAL 86 - 91



Reflections 74



Structure 90



Ultra 66

Ultra

Tables | Benches | Receptacles

High traffic areas demand strong, long-lasting outdoor furnishings that go far beyond customary durability standards. The Ultra collection has a wide range of products to completely furnish high traffic areas from start to finish.

Ultra furnishings are available in your choice of three steel pattern styles: expanded, perforated, or slotted steel.



Table L3015; Receptacle L1336M; Bike rack LBR3MASURF shown in pine and black; Umbrella 9LPU shown in terra cotta



Table F2015 — shown in navy and black

FEATURES

Steel tops/seats are protected by the Fusion Advantage finish (see page 7 for details). Steel frames are protected with a powder coated finish to resist rusting. Available in colors and steel patterns (expanded, perforated, or slotted) shown on pages 92-93.

4-Seat Tables Heavy-gauge steel table top/seats with steel frame. Portable/Surface Mount.
(Additional styles available at anovafurnishings.com/picnictables.)

| | | | |
|----------------------------------|-------|---------------|----------|
| 46" Table Top - Expanded Steel | F2015 | 30"H x 75"Sq. | 259 lbs. |
| 46" Table Top - Perforated Steel | D2015 | 30"H x 75"Sq. | 274 lbs. |
| 46" Table Top - Slotted Steel | L3015 | 30"H x 75"Sq. | 274 lbs. |

3-Seat ADA Tables Heavy-gauge steel table top/seats with steel frame.
Must be surface mounted. (Additional styles available at anovafurnishings.com/picnictables.)

| | | | |
|----------------------------------|-------|--------------------|----------|
| 46" Table Top - Expanded Steel | F2016 | 30"H x 61"W x 75"L | 213 lbs. |
| 46" Table Top - Perforated Steel | D2016 | 30"H x 61"W x 75"L | 231 lbs. |
| 46" Table Top - Slotted Steel | L3016 | 30"H x 61"W x 75"L | 231 lbs. |

2-Seat ADA Picnic Tables Heavy-gauge steel table top/seats with steel frame.
Must be surface mounted. (Additional styles available at anovafurnishings.com/picnictables.)

| | | | |
|----------------------------------|-------|--------------------|----------|
| 46" Table Top - Expanded Steel | F2017 | 30"H x 46"W x 75"L | 179 lbs. |
| 46" Table Top - Perforated Steel | D2017 | 30"H x 46"W x 75"L | 190 lbs. |
| 46" Table Top - Slotted Steel | L3017 | 30"H x 46"W x 75"L | 190 lbs. |

Lucaya Umbrellas Sunbrella marine-grade, acrylic fabric with aluminum pole. Standard and premium fabric colors shown on page 93. Pole colors shown at anovafurnishings.com/patterns.
(Additional umbrellas available at anovafurnishings.com/umbrellas.)

| | | | |
|-------------------------------------|---------|----------------|---------|
| 9' Diameter - Standard Color Fabric | 9LPU | 96"H x 9'Dia. | 28 lbs. |
| 9' Diameter - Premium Color Fabric | 9LPU-NS | 96"H x 9'Dia. | 28 lbs. |
| U-Brace Table Brace | UBRACE | ½"H x 1½" I.D. | 1 lb. |



2-Seat ADA Table L3017



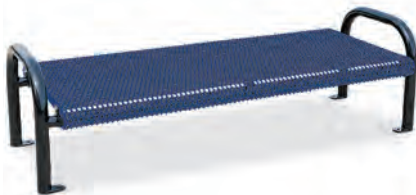
3-Seat ADA Table L3016



Contour Bench L1337; Receptacle L1336M — shown in textured bronze and silver

FEATURES

Seats are protected by the Fusion Advantage finish (see page 7 for details). Frames are protected with a powder coated finish to resist rusting. Rolled style seat edge for comfort. Available in colors and steel patterns (expanded, perforated, or slotted) shown on pages 92-93.



Flat Bench F1360



Custom Contour Bench C1337

Benches — Perforated Steel 12-gauge perforated steel seat with steel frame. (Additional sizes and styles available at anovafurnishings.com/ultra.)

| | | | |
|---|-------|--------------------|----------|
| 6' Contour Bench — Portable/Surface Mount | D1027 | 32"H x 27"W x 79"L | 148 lbs. |
| 6' Flat Bench — Portable/Surface Mount | D1360 | 23"H x 32"W x 79"L | 148 lbs. |

Benches — Slotted Steel 12-gauge slotted steel seat with steel frame. Custom bench has name laser cut into the bench back. (Additional sizes and styles available at anovafurnishings.com/ultra.)

| | | | |
|--|-------|--------------------|----------|
| 6' Contour Bench — Portable/Surface Mount | L1337 | 32"H x 27"W x 79"L | 138 lbs. |
| 6' Custom Contour Bench — Portable/Surface Mount | C1337 | 32"H x 27"W x 79"L | 138 lbs. |
| 6' Flat Bench — Portable/Surface Mount | L1420 | 27"H x 24"W x 79"L | 123 lbs. |

Benches — Expanded Steel 10-gauge expanded steel seat with steel frame. (Additional sizes and styles available at anovafurnishings.com/ultra.)

| | | | |
|---|-------|--------------------|----------|
| 6' Contour Bench — Portable/Surface Mount | F1027 | 32"H x 27"W x 79"L | 139 lbs. |
| 6' X-Wide Flat Bench — Portable/Surface Mount | F1360 | 23"H x 32"W x 79"L | 127 lbs. |
| 6' Flat Bench — Portable/Surface Mount | F1365 | 27"H x 24"W x 79"L | 122 lbs. |
| 6' Flat Bench — Inground Mount | F1369 | 27"H x 24"W x 79"L | 134 lbs. |



Table F2003; Receptacle F1021D — shown in burgundy and black



Custom Receptacle C1021



Receptacle L1402



Receptacle L1336D



Receptacle Base F1021L and Flat Top F1023; see details at anovafurnishings.com

FEATURES

Receptacle bases are protected by the Fusion Advantage finish (see page 7 for details.) Contour tops are protected with a powder coated finish to resist rust. Receptacles are complete with top and liner. Bases also sold separately at anovafurnishings.com/ultra; tops sold separately at anovafurnishings.com/accessories. Available in colors and steel patterns (expanded, perforated, or slotted) shown on pages 92-93.

Receptacles — Perforated Steel 12-gauge perforated steel base. Dome top is polyethylene. Contour top is steel. Custom receptacle base has name laser cut into the steel. Receptacles coordinate with Courtyard and Victory benches.

| | | | |
|--|--------|----------------|---------|
| 32 Gallon Receptacle with Dome Top and Liner | D1021D | 43"H x 25"Dia. | 87 lbs. |
| 32 Gallon Receptacle with Contour Top and Liner | D1021M | 30"H x 24"Dia. | 78 lbs. |
| 32 Gallon Receptacle with Dome Top and Liner — Custom | C1021D | 43"H x 25"Dia. | 79 lbs. |
| 32 Gallon Receptacle with Contour Top and Liner — Custom | C1021 | 30"H x 24"Dia. | 78 lbs. |

Receptacles — Slotted Steel 12-gauge slotted steel base. Ashtray top and dome top are polyethylene. Contour top is steel. Receptacles coordinate with Courtyard and Victory benches.

| | | | |
|---|--------|----------------|---------|
| 5 Gallon Receptacle with Ashtray Top and Liner | L1402 | 24"H x 14"Dia. | 38 lbs. |
| 32 Gallon Receptacle with Dome Top and Liner | L1336D | 43"H x 25"Dia. | 75 lbs. |
| 32 Gallon Receptacle with Contour Top and Liner | L1336M | 30"H x 24"Dia. | 79 lbs. |

Receptacles and Ash Urn — Expanded Steel 10-gauge expanded steel base. Ashtray top and dome top are polyethylene. Contour top is steel. Receptacles coordinate with Courtyard and Victory benches. (A 23-gallon capacity receptacle is available at anovafurnishings.com/ultra.)

| | | | |
|---|--------|----------------|---------|
| 5 Gallon Receptacle with Ashtray Top and Liner | F1381 | 24"H x 14"Dia. | 28 lbs. |
| 32 Gallon Receptacle with Dome Top and Liner | F1021D | 43"H x 25"Dia. | 77 lbs. |
| 32 Gallon Receptacle with Contour Top and Liner | F1021M | 30"H x 24"Dia. | 71 lbs. |
| Ash Urn with Ashtray Top | F1025 | 24"H x 11"Dia. | 27 lbs. |

Rally

Tables | Benches | Receptacles | Recyclers | Planter

Our best-selling Rally Collection delivers economical value without sacrificing performance. A wide selection of durable products makes it simple to furnish your site affordably. Create a unified look with Rally tables, contour and flat benches, receptacles, recyclers, and planters.



Square Table D6013; Bench D6002; Receptacle D6005DT; and Planter D6010 — shown in blue and black



Rectangular Table D6000 — shown in orange and black

FEATURES

Perforated steel seating, receptacle bases and table tops are protected by the Fusion Advantage finish (see page 7 for details). Steel frames, legs and receptacle tops are protected with a powder coated finish to resist rusting. Table and benches are portable/surface mount. Available in colors shown on page 92.

Picnic Tables 14-gauge perforated steel table top/seats with steel frame.

| | | | |
|--|----------|--------------------|----------|
| Square Table | D6013 | 29"H x 75" Sq. | 181 lbs. |
| Square Table with Commemorative Plaque | D6013COM | 29"H x 75" Sq. | 181 lbs. |
| 6' Rectangular Table | D6000 | 30"H x 64"W x 72"L | 184 lbs. |

Lucaya Umbrellas Sunbrella, marine-grade, acrylic fabric with aluminum pole. Standard and premium umbrella fabric colors shown on page 93. (Pole colors and additional umbrellas available at anovafurnishings.com/umbrellas.)

| | | | |
|-------------------------------------|---------|----------------|---------|
| 9' Diameter - Standard Color Fabric | 9LPU | 96"H x 9'Dia. | 28 lbs. |
| 9' Diameter - Premium Color Fabric | 9LPU-NS | 96"H x 9'Dia. | 28 lbs. |
| U-Brace Table Brace | UBRACE | ½"H x 1½" I.D. | 1 lb. |

Benches 14-gauge perforated steel seats with steel legs.

| | | | |
|--|----------|--------------------|----------|
| 4' Contour Bench — Portable/Surface Mount | D6003 | 32"H x 28"W x 55"L | 89 lbs. |
| 4' Contour Bench — Inground Mount | D6009 | 32"H x 28"W x 54"L | 94 lbs. |
| 6' Contour Bench — Portable/Surface Mount | D6002 | 32"H x 28"W x 79"L | 119 lbs. |
| 6' Contour Bench — Inground Mount | D6008 | 32"H x 28"W x 78"L | 124 lbs. |
| 6' Contour Bench with Commemorative Plaque | D6002COM | 32"H x 28"W x 79"L | 119 lbs. |
| 6' Flat Bench — Portable/Surface Mount | D6011 | 18"H x 28"W x 78"L | 98 lbs. |

Receptacles and Planter 14-gauge perforated steel base with steel top. Dome top is polyethylene. (See customization options at anovafurnishings.com/rally.)

| | | | |
|--|----------|----------------|---------|
| 32 Gallon Receptacle with Contour Top and Liner | D6004 | 30"H x 24"Dia. | 66 lbs. |
| 32 Gallon Receptacle with Dome Top and Liner | D6005DT | 43"H x 25"Dia. | 69 lbs. |
| 32 Gallon Receptacle with Dome Top, Custom Plate and Liner | D6005DTC | 43"H x 25"Dia. | 74 lbs. |
| Planter with Liner | D6010 | 18"H x 24"Dia. | 47 lbs. |

Recyclers 14-gauge perforated steel base with steel top. Steel pole. (See decal options at anovafurnishings.com/rally.)

| | | | |
|---|--------|-----------------------|----------|
| 32 Gallon Recycler with Decals and Liner | D6005R | 32"H x 24"Dia. | 67 lbs. |
| 96 Gallon Tri-Recycler with Decals and Liners | D6015 | 32"H x 50"Dia. | 169 lbs. |
| 96 Gallon Tri-Recycler with Pole, Decals and Liners | D6014 | 61"H (pole) x 50"Dia. | 185 lbs. |



Flat Bench D6011



Receptacle D6004



Custom Receptacle D6005DTC



Planter D6010



Lucaya Umbrella 9LPU; see details at anovafurnishings.com

Veranda

Tables | Chairs

Patio or poolside, the classic design of these table and chair sets creates versatile dining areas in just about any environment. Surfaces can be customized, offering a great way to market your brand.



Location complements of Mercy Hospital, Joplin, MO.

Round Table D1150 and Chair D1153 — shown in textured bronze



Round Table F1147 and Chair F1145 — shown in navy and black



Table D1150RSU and Chair D1153



Table D1158 and Chair D1156

FEATURES

Table tops and chair seats are protected by the Fusion Advantage finish (see page 7 for details). Table legs/posts and seat backs/legs are protected with a powder coated finish to resist rusting. Available in colors and steel patterns (expanded, perforated, or slotted) shown on pages 92-93.

Cafe Table 12-gauge solid surface steel table top with steel legs.

| | | | |
|--|----------|----------------|---------|
| 36" Solid Surface Round Table — Portable | D1150RSU | 30"H x 36"Dia. | 85 lbs. |
|--|----------|----------------|---------|

Patio Tables 12-gauge perforated or 10-gauge expanded steel table top with steel legs.

| | | | |
|--|-------|----------------|----------|
| 30" Perforated Square Table — Portable | D1152 | 30"H x 30"Sq. | 77 lbs. |
| 36" Perforated Round Table — Portable | D1150 | 30"H x 36"Dia. | 74 lbs. |
| 46" Expanded Round Table — Portable | F1147 | 29"H x 46"Dia. | 90 lbs. |
| 46" Perforated Round Table — Portable | D1147 | 29"H x 46"Dia. | 109 lbs. |

Bar Height Bistro Tables 12-gauge perforated steel table top with steel post/plate (surface mount), or steel post (inground mount). (Available in custom styles at anovafurnishings.com/veranda.)

| | | | |
|---|-------|----------------|---------|
| 36" Perforated Round Table — Surface Mount | D1158 | 41"H x 36"Dia. | 62 lbs. |
| 36" Perforated Round Table — Inground Mount | D1159 | 41"H x 36"Dia. | 74 lbs. |

Chairs Heavy-gauge perforated or 10-gauge expanded steel seat with steel back and legs.

| | | | |
|------------------------------------|-------|--------------------|---------|
| Perforated Round Patio Chair | D1153 | 35"H x 16"W x 20"D | 33 lbs. |
| Expanded Square Classic Chair | F1145 | 33"H x 22"W x 21"D | 35 lbs. |
| Perforated Square Classic Chair | D1145 | 33"H x 22"W x 21"D | 38 lbs. |
| Perforated Bar Height Bistro Stool | D1156 | 47"H x 16"W x 23"D | 30 lbs. |

Octagonal Umbrella with Push/Pin System Sunbrella, marine-grade, acrylic fabric canopy with champagne bronze, white or black aluminum pole. Steel umbrella base. Standard umbrella fabric colors shown on page 93. (Pole colors and additional umbrellas available at anovafurnishings.com/umbrellas.)

| | | | |
|--------------------------------------|--------|-----------------|---------|
| 7½' Diameter — Standard Color Fabric | 7MPU | 90"H x 7½' Dia. | 19 lbs. |
| Umbrella Base | UB15 | 6"H x 15"Dia. | 38 lbs. |
| U-Brace Table Brace | UBRACE | ½"H x 1½'I.D. | 1 lb. |



Receptacle D6004 shown on page 71



Bench D6002 shown on page 71



Market Umbrella 7MPU

Reflections

Benches | Receptacles

Brighten your site with bold curves and patterns. Reflections features contour benches in two bench end styles with coordinating receptacles. Go vintage with square tube ends or make it modern with x-style ends and steel slats.



Bench L1369 — shown in pine



Recycler L1464BT — shown in black and blue



Bench L1426; see details at anovafurnishings.com



Bench L1425



Receptacle L1406M

FEATURES

Bench seats and receptacle bases are protected by the Fusion Advantage finish (see page 7 for details). Bench ends and contour top are protected with a powder coated finish to resist rusting. Benches are portable/surface mount style. Available in colors shown on page 92.

Benches 10-gauge steel seat (diagonal style) with steel ends; 12-gauge steel seat (slatted style) with steel ends. (Additional sizes and steel patterns available at anovafurnishings.com/reflections.)

| | | | |
|---|-------|--------------------|----------|
| 6' Bench with Slatted Style Seat and X-Style Ends | L1367 | 35"H x 28"W x 75"L | 119 lbs. |
| 6' Bench with Slatted Style Seat, Armrests and Square Ends | L1369 | 33"H x 26"W x 76"L | 139 lbs. |
| 6' Bench with Diagonal Style Seat and X-Style Ends | L1424 | 35"H x 28"W x 75"L | 126 lbs. |
| 6' Bench with Diagonal Style Seat, Armrests and Square Ends | L1425 | 33"H x 26"W x 76"L | 136 lbs. |

Receptacles and Recyclers 12-gauge diagonal style slotted steel base with polyethylene dome top or steel contour top. (Additional steel patterns and tops available at anovafurnishings.com/reflections.)

| | | | |
|--|---------|--------------------|----------|
| 32 Gallon Diagonal Style Receptacle with Dome Top and Liner | L1406D | 43"H x 25"Dia. | 73 lbs. |
| 32 Gallon Diagonal Style Receptacle with Contour Top and Liner | L1406M | 30"H x 24"Dia. | 72 lbs. |
| 64 Gallon Web Style Recycler with Bonnet Top and Liners | L1464BT | 38"H x 40"W x 20"D | 166 lbs. |

Courtyard

Benches

Enhance your environment with the traditional charm of the Courtyard Collection. These furnishings give you affordable coated steel products with our Fusion Advantage protection. The collection features contour benches and coordinates with expanded steel receptacles and tables.



Bench F1035 — shown in black



Bench F1037 shown in pine; Coordinating receptacle F1021D shown on page 69

FEATURES

Seats are protected by the Fusion Advantage finish (see page 7 for details). Frames are protected with a powder coated finish to resist rusting. Available in colors shown on page 92.

Benches 10-gauge expanded steel seat with steel frame. (Additional sizes and styles available at anovafurnishings.com/courtyard.)

| | | | |
|--|-------|--------------------|----------|
| 6' Bench with Expanded Steel Seat — Surface Mount | F1037 | 34"H x 25"W x 77"L | 106 lbs. |
| 6' Bench with Expanded Steel Seat — Inground Mount | F1036 | 34"H x 25"W x 74"L | 113 lbs. |
| 6' Bench with Expanded Steel Seat — Gullwing Mount | F1035 | 34"H x 26"W x 74"L | 148 lbs. |
| 6' Bench with Expanded Steel Seat — Portable Mount | F1034 | 34"H x 32"W x 74"L | 122 lbs. |



Receptacle F3200; see details at anovafurnishings.com



Table F1111 shown on page 81

Victory

Benches

Our rugged Victory benches are available in lengths up to 20 feet long - big enough for the entire team. The steel is thickly coated with Fusion Advantage to make surfaces feel cooler to the touch in summer and warmer in the winter. Victory benches available with various metal patterns and sizes to fit your needs.



Bench F1061 shown in navy; Coordinating receptacle F1021M shown on page 69



Flat Bench F3022— shown in textured fern

FEATURES

Seats and backs are protected by the Fusion Advantage finish (see page 7 for details). Frames are protected with a powder coated finish to resist rusting. Three types of mounting styles available: portable, inground and surface. Available in colors and steel patterns (expanded and perforated) shown on pages 92-93.

Benches - Perforated Steel 12-gauge steel seat/back with steel frame. (Additional sizes, styles, custom and commemorative benches available at anovafurnishings.com/victory.)

| | | | |
|-------------------------------------|-------|--------------------|----------|
| 6' Bench with Back - Portable Mount | D1060 | 37"H × 27"W × 72"L | 121 lbs. |
| 6' Bench with Back - Inground Mount | D1061 | 36"H × 23"W × 72"L | 114 lbs. |
| 6' Bench with Back - Surface Mount | D1062 | 36"H × 23"W × 72"L | 113 lbs. |
| 6' Flat Bench - Portable Mount | D3020 | 20"H × 27"W × 72"L | 67 lbs. |
| 6' Flat Bench - Inground Mount | D3021 | 20"H × 10"W × 72"L | 59 lbs. |
| 6' Flat Bench - Surface Mount | D3022 | 20"H × 10"W × 72"L | 58 lbs. |

Benches - Expanded Steel 10-gauge steel seat/back with steel frame. (Additional sizes and edge styles available at anovafurnishings.com/victory.)

| | | | |
|-------------------------------------|-------|--------------------|----------|
| 6' Bench with Back - Portable Mount | F1060 | 37"H × 27"W × 72"L | 111 lbs. |
| 6' Bench with Back - Inground Mount | F1061 | 36"H × 23"W × 72"L | 111 lbs. |
| 6' Bench with Back - Surface Mount | F1062 | 36"H × 23"W × 72"L | 103 lbs. |
| 6' Flat Bench - Portable Mount | F3020 | 20"H × 27"W × 72"L | 63 lbs. |
| 6' Flat Bench - Inground Mount | F3021 | 20"H × 10"W × 72"L | 55 lbs. |
| 6' Flat Bench - Surface Mount | F3022 | 20"H × 10"W × 72"L | 54 lbs. |

Deep Seat Benches - Expanded Steel 10-gauge steel seat/back with steel frame. (Additional sizes and styles available at anovafurnishings.com/victory.)

| | | | |
|-------------------------------------|-------|--------------------|----------|
| 6' Bench with Back - Portable Mount | F1338 | 39"H × 27"W × 72"L | 132 lbs. |
| 6' Bench with Back - Inground Mount | F1337 | 39"H × 25"W × 72"L | 125 lbs. |
| 6' Bench with Back - Surface Mount | F1339 | 39"H × 25"W × 72"L | 124 lbs. |
| 6' Flat Bench - Portable Mount | F3018 | 20"H × 27"W × 72"L | 66 lbs. |
| 6' Flat Bench - Inground Mount | F3017 | 20"H × 15"W × 72"L | 58 lbs. |
| 6' Flat Bench - Surface Mount | F3039 | 20"H × 15"W × 72"L | 64 lbs. |



Custom Bench C1060; see details at anovafurnishings.com



Receptacle D6004 shown on page 71

Picnic Tables

Our picnic tables exceed performance expectations every time. These popular tables provide easy access to ample seating and are made to last for years in heavy-usage areas. The collection features a variety of styles, shapes, and seating, including ADA picnic tables.



Table F1111 — shown in textured bronze



Table D2003 — shown in black



Table F2014



ADA Table F2016

FEATURES

Steel tops/seats are protected by the Fusion Advantage finish (see page 7 for details). Steel frames are protected with a powder coated finish to resist rusting.

Rectangular Picnic Tables – Perforated Steel 12-gauge perforated steel table top/seats with steel frame. (Additional sizes and styles available at anovafurnishings.com/picnictables.)

| | | | |
|---------------------------|-------|--------------------|----------|
| 6' Table – Portable Frame | D2003 | 29"H x 64"W x 72"L | 246 lbs. |
| 8' Table – Portable Frame | D2014 | 29"H x 64"W x 96"L | 289 lbs. |

Rectangular Picnic Tables – Slotted Steel 12-gauge slotted steel table top/seats with steel frame. (Additional sizes and styles available at anovafurnishings.com/picnictables.)

| | | | |
|---------------------------|-------|--------------------|----------|
| 6' Table – Portable Frame | L2003 | 29"H x 64"W x 72"L | 246 lbs. |
|---------------------------|-------|--------------------|----------|

Rectangular Picnic Tables – Expanded Steel 10-gauge expanded steel table top/seats with steel frame. (Additional sizes and styles available at anovafurnishings.com/picnictables.)

| | | | |
|---------------------------|-------|--------------------|----------|
| 6' Table – Portable Frame | F2003 | 29"H x 64"W x 72"L | 213 lbs. |
| 8' Table – Portable Frame | F2014 | 29"H x 64"W x 96"L | 254 lbs. |

Square Picnic Tables – Perforated Steel 12-gauge perforated steel table top/seats with steel frame. (Additional styles available at anovafurnishings.com/picnictables.)

| | | | |
|------------------------------------|-------|---------------|----------|
| 46" Table – Portable Frame | D1111 | 29"H x 75"Sq. | 229 lbs. |
| 46" Table – Portable/Surface Mount | D2015 | 30"H x 75"Sq. | 274 lbs. |

Square Picnic Tables – Slotted Steel 12-gauge slotted steel table top/seats with steel frame. (Additional styles available at anovafurnishings.com/picnictables.)

| | | | |
|----------------------------|-------|---------------|----------|
| 46" Table – Portable Frame | L1111 | 29"H x 75"Sq. | 229 lbs. |
|----------------------------|-------|---------------|----------|

Square Picnic Tables – Expanded Steel 10-gauge expanded steel table top/seats with steel frame. (Additional styles available at anovafurnishings.com/picnictables.)

| | | | |
|------------------------------------|-------|---------------|----------|
| 46" Table – Portable Frame | F1111 | 29"H x 75"Sq. | 214 lbs. |
| 46" Table – Portable/Surface Mount | F2015 | 30"H x 75"Sq. | 259 lbs. |

ADA Picnic Tables

| | | | |
|---|-------|--------------------|----------|
| 8' Expanded Steel Table – Portable Frame | F1038 | 34"H x 64"W x 96"L | 266 lbs. |
| 8' Perforated Steel Table – Portable Frame | D1007 | 33"H x 64"W x 96"L | 350 lbs. |
| 46" Sq. Expanded Steel Table – Portable/Surface Mount | F2016 | 30"H x 61"W x 75"L | 213 lbs. |



Receptacle D6004 shown on page 71



Planter D6010 shown on page 71



Lucaya Umbrella 9LPU; see details at anovafurnishings.com



Round Table D1113 —shown in navy



Contour Bench F1027 shown on page 68

Round Picnic Tables - Perforated Steel 12-gauge perforated steel table top/seats with steel frame. (Additional styles available at anovafurnishings.com/picnictables.)

| | | | |
|----------------------------|-------|----------------|----------|
| 46" Table - Portable Frame | D1113 | 29"H x 76"Dia. | 216 lbs. |
| 46" Table - Inground Mount | D1005 | 29"H x 75"Dia. | 262 lbs. |

Round Picnic Tables - Expanded Steel 10-gauge expanded steel table top/seats with steel frame. (Additional styles available at anovafurnishings.com/picnictables.)

| | | | |
|----------------------------|-------|----------------|----------|
| 46" Table - Portable Frame | F1113 | 29"H x 76"Dia. | 189 lbs. |
| 46" Table - Inground Mount | F1005 | 29"H x 75"Dia. | 235 lbs. |



Receptacle D1021M shown on page 69

Lucaya Umbrellas Sunbrella marine-grade, acrylic fabric with aluminum pole. Standard and premium fabric colors are shown on page 93. (Pole colors and additional umbrellas available at anovafurnishings.com/umbrellas.)

| | | | |
|-------------------------------------|---------|----------------|---------|
| 9' Diameter - Standard Color Fabric | 9LPU | 96"H x 9'Dia. | 28 lbs. |
| 9' Diameter - Premium Color Fabric | 9LPU-NS | 96"H x 9'Dia. | 28 lbs. |
| U-Brace Table Brace | UBRACE | ½"H x 1½" I.D. | 1 lb. |



Table RCPHEX — shown in cedar and black



Table RCP6



ADA Table RCPHEXADA



Bench RCPTC6

FEATURES

All recycled plastic planks are 95% recycled content by weight. Steel bench legs, cast iron bench legs and steel receptacle tops are protected with a powder coated finish to resist rusting. Contour and flat bench are surface or inground mount style. Available in colors shown on page 92.

Recycled Plastic Picnic Tables *Recycled plastic plank table top/seats with recycled plastic legs.*

| | | | |
|------------------------------------|-----------|--------------------|----------|
| Hexagon Table | RCPHEX | 31"H x 71"W x 73"L | 213 lbs. |
| ADA Hexagon Recycled Plastic Table | RCPHEXADA | 31"H x 63"W x 71"L | 195 lbs. |
| 6' Rectangular Table | RCP6 | 31"H x 60"W x 72"L | 214 lbs. |

Receptacles *Recycled plastic planks with polyethylene top. (See decal options at anovafurnishings.com/recycled.)*

| | | | |
|--|--------|---------------|---------|
| 30 Gallon Receptacle with Push Door Top and Liner | PLS30H | 41"H x 18"Sq. | 35 lbs. |
| 30 Gallon Receptacle with Recycler Top, Decals and Liner | PLS30R | 41"H x 18"Sq. | 35 lbs. |

Benches *Recycled plastic plank seat/back with recycled plastic legs (Traditional), steel legs (Contour and Flat) or cast iron legs (Parkway). (Additional sizes and styles available at anovafurnishings.com/recycled.)*

| | | | |
|---|--------|--------------------|----------|
| 6' Traditional Bench with Back | RCPSC6 | 34"H x 27"W x 72"L | 115 lbs. |
| 6' Traditional Wide Plank Bench with Back | RCPTC6 | 36"H x 28"W x 72"L | 128 lbs. |
| 6' Contour Bench | PBM6B | 36"H x 21"W x 72"L | 233 lbs. |
| 6' Flat Bench | FBM6B | 20"H x 21"W x 72"L | 144 lbs. |
| 6' Parkway Flat Bench | FBW6R | 19"H x 24"W x 72"L | 164 lbs. |



Receptacle PLS30H

Bike Racks

Traditional

Built to last, Foundations bike racks will provide years of maintenance-free usage. The collection offers a range of bike capacities to fit any site.



Metro Bike Rack LBR7PSURF — shown in textured bronze



Traditional Bike Rack BRP300 — shown in black

FEATURES

Bike racks are protected with a powder coated finish to resist rusting. Metro bike racks also available in the Fusion Advantage finish (see page 7 for details). Available in colors shown on page 92.

Traditional and Scooter Bike Racks *Steel tubing with solid steel rods. (Additional bike capacities available at anovafurnishings.com/traditionalbikeracks.)*

| | | | |
|---|--------|--------------------|----------|
| 7-Bike Traditional Bike Rack - Portable/Surface Mount | BRP300 | 34"H x 28"W x 77"L | 120 lbs. |
| 7-Bike Sport & Scooter Bike Rack - Portable/Surface Mount | BRP304 | 34"H x 28"W x 77"L | 105 lbs. |

Bike Posts & Stations *10-gauge steel tubing. Medallion available separately. (Additional mounting styles available at anovafurnishings.com/traditionalbikeracks.)*

| | | | |
|--|-----------|-------------------|---------|
| 2-Bike Marquee Bike Post - Surface Mount | LBRCPSURF | 37"H x 17"W x 5"D | 19 lbs. |
| 2-Bike Medallion Bike Post - Surface Mount | LBRMSURF | 41"H x 15"W x 5"D | 13 lbs. |
| 2-Bike U-Bike Station - Surface Mount | LBR2PSURF | 31"H x 35"W x 5"D | 19 lbs. |
| 8-Bike Euro Bike Station - Surface Mount | F1201 | 25"H x 12"Sq. | 27 lbs. |

Metro Fusion Advantage Finish *10-gauge steel tubing. (Additional bike capacities and mounting options available at anovafurnishings.com/traditionalbikeracks.)*

| | | | |
|-----------------------------|-------------|-------------|----------|
| 3-Bike Rack - Surface Mount | LBR3PVCSURF | 36"H x 18"W | 28 lbs. |
| 5-Bike Rack - Surface Mount | LBR5PVCSURF | 36"H x 42"W | 55 lbs. |
| 7-Bike Rack - Surface Mount | LBR7PVCSURF | 36"H x 66"W | 82 lbs. |
| 9-Bike Rack - Surface Mount | LBR9PVCSURF | 36"H x 91"W | 109 lbs. |

Metro Powder Coat Finish *10-gauge steel tubing. (Additional bike capacities and mounting options available at anovafurnishings.com/traditionalbikeracks.)*

| | | | |
|-----------------------------|-----------|-------------|---------|
| 3-Bike Rack - Surface Mount | LBR3PSURF | 36"H x 17"W | 21 lbs. |
| 5-Bike Rack - Surface Mount | LBR5PSURF | 36"H x 42"W | 40 lbs. |
| 7-Bike Rack - Surface Mount | LBR7PSURF | 36"H x 65"W | 59 lbs. |
| 9-Bike Rack - Surface Mount | LBR9PSURF | 36"H x 91"W | 78 lbs. |

Multi-Axis Bike Rack - Powder Coat Finish *10-gauge steel tubing.*

| | | | |
|-----------------------------|------------|--------------------|---------|
| 3-Bike Rack - Surface Mount | LBR3MASURF | 37"H x 17"W x 30"L | 42 lbs. |
|-----------------------------|------------|--------------------|---------|



Sport and Scooter Bike Rack BRP304



Marquee Bike Post LBRCPSURF



Multi-Axis Bike Rack LBR3MASURF

Balance

Benches | Receptacles | Bike Rack

Traditional with a twist: The Balance Collection offers a unique combination of natural stone and steel. Choose from a variety of configurations and colors to suit your site perfectly.

Balance furnishings are a great choice for walkways, courtyards and parks. The collection features contour and flat benches, receptacles and bike racks (see **coordinating Bike Racks** at anovafurnishings.com/balance).



Bench TSSCBEN6 shown in black and alpine red; Coordinating ash urn PCSPYA shown in page 91



Receptacles TSP and TSX shown in riverrock and black lustré



Flat Bench KTSXBEN6



Custom Bench CTSCBEN6; see details at anovafurnishings.com



Custom Receptacle TSXCUST; see details at anovafurnishings.com



Bike Rack TSBR8P; see details at anovafurnishings.com

FEATURES

Bench seats and receptacle panels are protected by the Fusion Advantage finish (see page 7 for details). Cast iron inserts are protected with a powder coated finish to resist rusting. Benches are portable/surface mount style. Available in colors shown on pages 92 and 93.

Contour Benches — Perforated Steel Seat 12-gauge perforated steel seat with cast stone ends and plastic armrests. (Additional sizes, styles, insert options and matching bike racks are available at anovafurnishings.com/balance.)

| | | | |
|---------------------------------|-----------|--------------------|----------|
| 6' Bench with Cast Iron Inserts | KTSPCBEN6 | 31"H x 26"W x 76"L | 268 lbs. |
| 6' Bench with Solid Ends | TSPCBEN6 | 31"H x 26"W x 76"L | 293 lbs. |

Contour Benches — Slotted Steel Seat 12-gauge slotted steel seat with cast stone ends and plastic armrests. (Additional sizes, styles, insert options and matching bike racks are available at anovafurnishings.com/balance.)

| | | | |
|---------------------------------|-----------|--------------------|----------|
| 6' Bench with Cast Iron Inserts | KTSSCBEN6 | 31"H x 26"W x 76"L | 268 lbs. |
| 6' Bench with Solid Ends | TSSCBEN6 | 31"H x 26"W x 76"L | 293 lbs. |

Contour Benches — Expanded Steel Seat 10-gauge expanded steel seat with cast stone ends and plastic armrests. (Additional sizes, styles, insert options and matching bike racks are available at anovafurnishings.com/balance.)

| | | | |
|---------------------------------|-----------|--------------------|----------|
| 6' Bench with Cast Iron Inserts | KTSXCBEN6 | 31"H x 26"W x 76"L | 252 lbs. |
| 6' Bench with Solid Ends | TSXCBEN6 | 31"H x 26"W x 76"L | 282 lbs. |

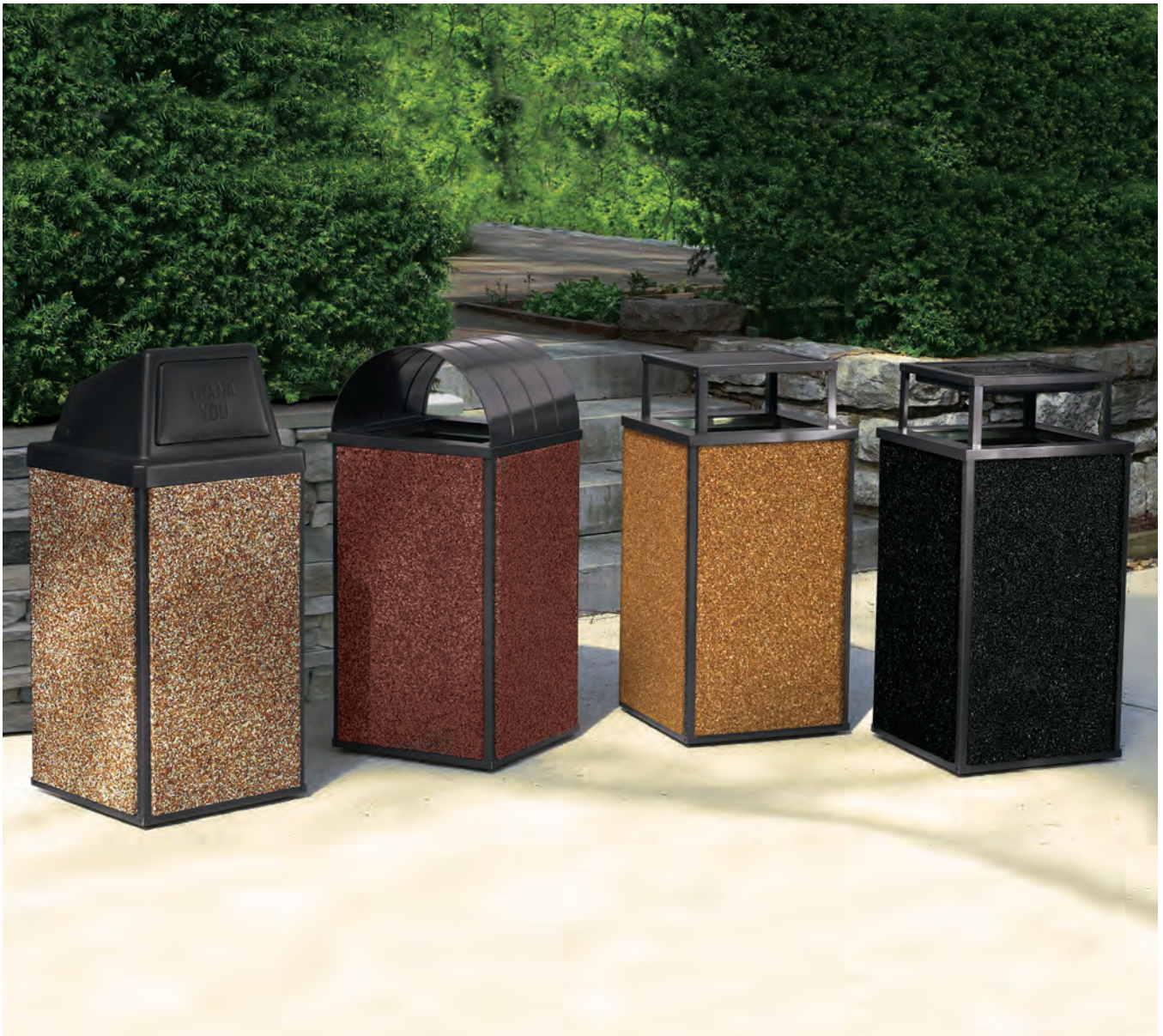
Receptacles — Steel side panels, cast stone ends and polyethylene top. (Additional sizes, styles and insert options are available at anovafurnishings.com/balance.)

| | | | |
|---|------|--------------------|----------|
| 30 Gallon Receptacle with Cast Iron Insert, Top and Liner — Perforated Steel Panels | KTSP | 33"H x 22"W x 20"D | 177 lbs. |
| 30 Gallon Receptacle with Top and Liner — Perforated Steel Panels | TSP | 33"H x 22"W x 20"D | 181 lbs. |
| 30 Gallon Receptacle with Cast Iron Insert, Top and Liner — Slotted Steel Panels | KTSS | 33"H x 22"W x 20"D | 177 lbs. |
| 30 Gallon Receptacle with Top and Liner — Slotted Steel Panels | TSS | 33"H x 22"W x 20"D | 181 lbs. |
| 30 Gallon Receptacle with Cast Iron Insert, Top and Liner — Expanded Steel Panels | KTSX | 33"H x 22"W x 20"D | 169 lbs. |
| 30 Gallon Receptacle with Top and Liner — Expanded Steel Panels | TSX | 33"H x 22"W x 20"D | 173 lbs. |

Essence

Receptacles

The texture of stone makes these receptacles a time-tested favorite. Choose our heavy-duty version, backed with strong galvanized steel, for high-use areas such as city parks. Use the standard receptacle in less demanding environments. A wide variety of top styles makes it easy to create just the right look for your space.



Receptacles E30AGHT, E30AGCT, E30AG and E30AGL — shown in riverrock, alpine red, golden glo and black lustre; see details at anovafurnishings.com



Ash Trash Receptacle FT8AG and P32AGAC — shown in coffee bean; see details at anovafurnishings.com

FEATURES

Heavy-duty and rounded corner receptacles are reinforced with galvanized steel. Aluminum tops and frames are protected with a powder coated finish to resist rusting. Thick stone is cast in polymer matrix concrete. Available in colors shown on page 92.

Heavy-Duty Receptacles and Ash Urn *Four stone panels with aluminum frame. Curved top, bonnet top and bonnet ash top are aluminum. Flat top, ash cover top, push door top and recycler top are polyethylene. (Additional sizes, top styles and standard receptacle styles available at anovafurnishings.com/essence.)*

| | | | |
|---|----------|---------------|----------|
| Urn with Ash Cover Top | GURNAGAC | 29"H x 10"Sq. | 51 lbs. |
| 8 Gallon Receptacle with Flat Ashtray Top and Liner | GFT8AG | 31"H x 13"Sq. | 80 lbs. |
| 8 Gallon Receptacle with Ash Cover Top and Liner | GFT8AGAC | 35"H x 13"Sq. | 70 lbs. |
| 30 Gallon Receptacle with Bonnet Top and Liner | GE30AG | 37"H x 18"Sq. | 119 lbs. |
| 30 Gallon Receptacle with Push Door Top and Liner | GE30AGHT | 41"H x 18"Sq. | 105 lbs. |
| 30 Gallon Receptacle with Bonnet Ash Top and Liner | GE30AGL | 38"H x 18"Sq. | 114 lbs. |
| 30 Gallon Receptacle with Curved Top and Liner | GE30AGCT | 39"H x 18"Sq. | 112 lbs. |
| 30 Gallon Recycler with Decals and Liner | GE30AGRT | 41"H x 18"Sq. | 105 lbs. |

Heavy-Duty Rounded Corner Receptacles *Four stone panels with aluminum frame and polyethylene top. Curved top is aluminum. (Additional sizes, top styles and standard receptacle styles available at anovafurnishings.com/essence.)*

| | | | |
|--|-----------|----------------|----------|
| 30 Gallon Receptacle with Curved Top and Liner | GWR30AGCT | 38"H x 19"Sq. | 107 lbs. |
| 30 Gallon Receptacle with Open Top and Liner | GWR30AGOT | 29"H x 19"Sq. | 104 lbs. |
| 30 Gallon Receptacle with Ash/Trash Top and Liner | GWR30AGST | 29"H x 19"Sq. | 112 lbs. |
| 30 Gallon Receptacle with Curved Corner Top and Bag Holder | GWR30SO | 38"H x 19" Sq. | 106 lbs. |



Receptacle GWR30AGOT



Custom Receptacle E30COMHT; see details at anovafurnishings.com

Structure

Benches | Receptacles | Ash Urns | Planters

Reliable performance meets craftsmanship. The Structure Collection complements public spaces with durable and inviting stone. Impervious to weather, this robust line of products include receptacles, smoking urns, benches and planters.



Receptacle PCS55PDT — shown in riverrock and brown



Ash Urn PCSPYA — shown in riverrock, black lustre, alpine red, golden glo and coffee bean

FEATURES

Natural stone cast in polymer matrix concrete. Bench seats and backs are protected by the Fusion Advantage finish (see page 7 for details). Aluminum receptacle tops are protected with a powder coated finish to resist rusting. Benches are portable/surface mount style. Available in colors shown on page 92.

Benches Steel seats/backs with cast stone legs. (Additional sizes, matching bike racks and modular planters are available at anovafurnishings.com/structure.)

| | | | |
|--|-----------|--------------------|----------|
| 6' Bench with Slotted Steel Seat and Back | PCSSBEN6 | 32"H x 22"W x 72"L | 303 lbs. |
| 6' Contour Crescent Bench with Slotted Steel Diagonal Style Seat | CRNCBEN6 | 32"H x 32"W x 76"L | 406 lbs. |
| 6' Bench with Expanded Steel Seat and Back | PCSXMBEN6 | 32"H x 22"W x 72"L | 276 lbs. |

Receptacles Cast stone body. Dome top and ash cover tops are polyethylene. Bonnet top is aluminum. (Additional sizes and styles are available at anovafurnishings.com/structure.)

| | | | |
|--|----------|----------------|----------|
| 20 Gallon Receptacle with Ash Cover Top and Liner | PCS20LAC | 35"H x 18"Sq. | 189 lbs. |
| 30 Gallon Receptacle with Bonnet Top and Liner | PCS30RB | 37"H x 18"Sq. | 180 lbs. |
| 55 Gallon Octagonal Receptacle with Dome Top and Liner | PCS55PDT | 51"H x 28"Dia. | 348 lbs. |

Ash Urns Cast stone body. Pyramid Urn has cast aluminum top. (Additional ash urns are available at anovafurnishings.com/structure.)

| | | | |
|-----------------|--------|---------------------------------|----------|
| Pyramid Ash Urn | PCSPYA | 35"H x 12"Sq. Base x 4"Sq. Top | 93 lbs. |
| Square Ash Urn | PCSURN | 25"H x 12"Sq. Base x 10"Sq. Top | 146 lbs. |



Receptacle PCS30A; see details at anovafurnishings.com



Receptacle PCSSBEN6

Colors

Metal Colors

Glossy Finish



Black



Gray



Silver



Brown



Slate



Blue



Navy



Sage



Pine



Red



Burgundy

Textured Finish



Textured Black



Textured White



Textured Pewter



Textured Sandstone



Textured Bronze



Textured Charcoal



Textured Fern

Select Colors

May require an additional charge.



Yellow



Orange



Teal



Purple

Recycled Plastic



Black



Gray



Cedar



Mahogany

Bamboo



Honey



Fawn



Oxford Brown

Natural Stone



Black Lustre



Riverrock



Golden Glo



Coffee Bean



Alpine Red

Colors

Umbrella Colors

Standard Colors



Black



Smoke



Natural



Linen



Beige



Spa



Fern



Forest Green



Ginko



Turquoise



Pacific Blue



Marine Blue



Buttercup



Terra Cotta



Dubonnet
Tweed

Premium Colors



Sunflower
Yellow



Tuscan



Jockey Red



Logo Red



Burgundy



Mahogany

Polyethylene/ Plastic Colors



Black



Gray



Taupe



Tan/Chestnut



Brown



Bronze



Green

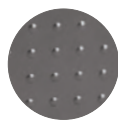


Blue



Red

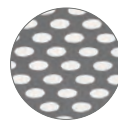
Steel Patterns



Embossed



Expanded



Oval



Parquet



Perforated



Slatted



Slotted

Index

ACCESSORIES

UB15 73
UBRACE 29, 33, 57, 67,
71, 73, 82

ASH URNS

F1025 69
GURNAGAC 89
PCSPYA 91
PCSURN 91

BENCHES

Benches with Backs

D1060 79
D1061 79
D1062 79
F1060 79
F1061 79
F1062 79
F1337 79
F1338 79
F1339 79
PCSSBEN6 91
PCSXMBEN6 91
RCPSC6 83
RCPTC6 83

Contour Benches

AE2680LF 14
AE2680STX 14
AL1980 23
AL1980B 23
AL1980P 24
AL1980R 23
AL1980W 25
AL1980WB 25
AL1980WR 25
AL1984 23
AL1984B 23
AL1984R 23
BH1880B 30
BH1880R 30
BH1884B 30
BH1884R 30
C1337 68
CR2780B 17
CR2780R 17
CR2784B 17
CR2784R 17

CRNCBEN6 91
F1027 68
D1027 68
D6002 71
D6002COM 71
D6003 71
D6008 71
D6009 71
F1034 77
F1035 77
F1036 77
F1037 77
KTSPCBEN6 87
KTSSCBEN6 87
KTSXCBEN6 87
L1337 68
L1360 58
L1360A 58
L1361 58
L1364 58
L1366 58
L1367 75
L1369 75
L1424 75
L1425 75
L1440 34
L1440A 34
L1441 34
L1441A 34
L1504 63
L1506 63
L1506A 63
L1508 63
L1512 63
L1770 37
L1771 37
L1772 37
L1773 37
L1774 37
L1775 37
L2010 41
L2015 41
L2016 41
LBMC6 39
LEXC4 27
LEXC5 27
LEXC6 27
LNC4 43
LNC6 43

M2016 47
PBM6B 83
PL2480 55
RCPMC6 39
RCPWC6 61
TSPCBEN6 87
TSSCBEN6 87
TSXCBEN6 87
Flat Benches
AE2690LF 14
AE2690STX 14
AL1990 23
AL1990B 23
AL1990P 24
AL1990R 23
AL1990W 25
AL1990WB 25
AL1990WR 25
AL1994 23
AL1994B 23
AL1994R 23
BH1890B 30
BH1890R 30
BH1894B 30
BH1894R 30
D1360 68
D3020 79
D3021 79
D3022 79
D6011 71
F1360 68
F1365 68
F1369 68
F3017 79
F3018 79
F3020 79
F3021 79
F3022 79
F3039 79
FBM6B 83
FBW6R 83
L1370 58
L1371 58
L1374 58
L1375 58
L1420 68
L1442 34
L1443 34
L1780 37

L1782 37
L1784 37
L2012 41
L2013 41
L2014 41
LBAF6 45
LBMF6 39
LEXF4 27
LEXF5 27
LEXF6 27
LNF4 43
LNF6 43
M2006 47
M2026 47
MIX2960B 20
MIX2960R 20
PL2490 55
RCPAF6 45
RCPMF6 39
RCPWF6 61

Divided Seating Benches

L1366A 58
L1441P 34
L1512A 63
BIKE RACKS
AL19BR2 25, 53
BRP300 85
BRP304 85
CIRCLBR 53
CIRCLEBR2 53
F1201 85
LBCBR 53
LBCBR-CUST 53
LBCBR2 53
LBCBR2-CUST 53
LBRCP SURF 85
LBRMSURF 85
LBR2PSURF 85
LBR3MASURF 85
LBR3PSURF 85
LBR5PSURF 85
LBR7PSURF 85
LBR9PSURF 85
LBR3PVCSURF 85
LBR5PVCSURF 85
LBR7PVCSURF 85
LBR9PVCSURF 85

RECEPTACLES

AE2645CT 15
AE2645CT-LF 15
AE2645CT-STX 15
AE2645RCT 15
AE2645RCT-LF 15
AE2645RCT-STX 15
BH1835B 31
BH1835BBT 31
BH1835R 31
BH1835RBT 31
BH1845B 31
BH1845BBT 31
BH1845R 31
BH1845RBT 31
BH1870B 31
BH1870BBT 31
BH1870R 31
BH1870RBT 31
C1021 69
C1021D 69
D1021D 69
D1021M 69
D6004 71
D6005DT 71
D6005DTC 71
D6005R 71
D6014 71
D6015 71
E20TPAC 47
E30TPABT 47
E30TPBT 47
E30TPCT 47
E30TPHT 47
E30TPOT 47
E32TPAC 47
E48TPABT 47
E48TPBT 47
E48TPCT 47
E48TPHT 47
F1021D 69
F1021M 69
F1381 69
GE30AG 89
GE30AGCT 89
GE30AGHT 89
GE30AGL 89
GE30AGRT 89
GFT8AG 89

Index

| | | | | |
|--------------|------------------------|---------------|--------------|---------------------|
| GFT8AGAC 89 | PCS30RB 91 | L1310 58 | D2014 81 | L2003 81 |
| GWR30AGCT 89 | PCS55PDT 91 | L1311 58 | D2015 67, 81 | L3015 67, 81 |
| GWR30AGOT 89 | PLS30H 83 | L1410 34 | D2016 67 | L3016 67 |
| GWR30AGST 89 | PLS30R 83 | L1411 34 | D2017 67 | L3017 67 |
| GWR30SO 89 | PT4500 49 | L1710 37 | D6000 71 | LBMT4 39 |
| KTSP 87 | PT4500R 49 | L1711 37 | D6013 71 | MIX2920B 19 |
| KTSS 87 | RCPWCT 61 | MIX2927B 20 | D6013COM 71 | MIX2920R 19 |
| KTSX 87 | RCPWOT 61 | MIX2927R 20 | F1005 82 | MIX2925B 19 |
| L1336D 69 | TSP 87 | MIX2937B 20 | F1038 81 | MIX2925R 19 |
| L1336M 69 | TSS 87 | MIX2937R 20 | F1111 81 | MIX2930B 19 |
| L1378AT 59 | TSX 87 | T2235B 51 | F1113 82 | MIX2930R 19 |
| L1378BT 59 | TL35AT 39 | T2235R 51 | F1147 73 | MIX2935B 19 |
| L1378CT 59 | TL35BT 39 | T2245B 51 | F2003 81 | MIX2935R 19 |
| L1378OH 59 | TL35BTA 39 | T2245R 51 | F2014 81 | MIX2940B 19 |
| L1380AT 59 | TL35DT 39 | | F2015 67, 81 | MIX2940R 19 |
| L1380BT 59 | TL35DRT 39 | TABLES | F2016 67, 81 | MIX2945B 19 |
| L1380CT 59 | TL35OT 39 | AE26T40 13 | F2017 67 | MIX2945R 19 |
| L1382 59 | TL35VBT 39 | AE26T40B 13 | L1111 81 | MIX2950B 19 |
| L1382BT 59 | TL35VRT 39 | AE26T48 13 | L1300 57 | MIX2950R 19 |
| L1383AT 59 | TR35AT 39 | AE26T48B 13 | L1301 57 | MIX2955B 19 |
| L1383BT 59 | TR35BT 39 | BH1800B 29 | L1301S 57 | MIX2955R 19 |
| L1383CT 59 | TR35BTA 39 | BH1800R 29 | L1387 57 | RCP6 83 |
| L1383OH 59 | TR35DT 39 | BH1801B 29 | L1388S 57 | RCPHEX 83 |
| L1402 69 | TR35DRT 39 | BH1801R 29 | L1390 57 | RCPHEXADA 83 |
| L1406D 75 | TR35OT 39 | BH1801SB 29 | L1391 57 | RCPMT4 39 |
| L1406M 75 | TR35VBT 39 | BH1801SR 29 | L1392S 57 | RCPWT6 61 |
| L1438 35 | TR35VRT 39 | BH1830B 29 | L1393S 57 | T2237B 51 |
| L1439 35 | PLANTERS | BH1830R 29 | L1394 57 | T2237R 51 |
| L1464BT 75 | BH1825PB 31 | BH1830SB 29 | L1395S 57 | T2247B 51 |
| L1535 63 | BH1825PR 31 | BH1830SR 29 | L1400 33 | T2247R 51 |
| L2006 41 | BH1850PB 31 | BH1831B 29 | L1401 33 | |
| L2007 41 | BH1850PR 31 | BH1831R 29 | L1401S 33 | UMBRELLAS |
| L2008 41 | D6010 71 | BH1840B 29 | L1444 33 | 9LPU 67, 71, 82 |
| L2009 41 | L1386 59 | BH1840R 29 | L1445 33 | 9LPU-NS 67, 71, 82 |
| L2019 41 | MPLANTER 47 | BH1840SB 29 | L1448 33 | 9LPU-CSC 29, 33, 57 |
| L2019A 41 | | BH1840SR 29 | L1446S 33 | 9LPU-CPC 29, 33, 57 |
| L2020 41 | STOOLS / CHAIRS | BH1841B 29 | L1447S 33 | 7MPU 73 |
| L2020A 41 | AE26T60LF 13 | BH1841R 29 | L1449S 33 | |
| L2040 35 | AE26T60STX 13 | D1005 82 | L1450 33 | |
| L2040AT 35 | AE26T70LF 13 | D1007 81 | L1451S 33 | |
| L2055 35 | AE26T70STX 13 | D1111 81 | L1700 37 | |
| L2055A 35 | BH1810B 30 | D1113 82 | L1701 37 | |
| LEX22 27 | BH1810R 30 | D1147 73 | L1701S 37 | |
| LEX22P 27 | BH1811B 30 | D1150 73 | L1740 37 | |
| LEX33 27 | BH1811R 30 | D1150RSU 73 | L1740S 37 | |
| LEX33P 27 | D1145 73 | D1152 73 | L1741 37 | |
| LEX45 27 | D1153 73 | D1158 73 | L1760 37 | |
| LEX70 27 | D1156 73 | D1159 73 | L1760S 37 | |
| PCS20LAC 91 | F1145 73 | D2003 81 | L1761 37 | |

Contact Us



211 North Lindbergh Boulevard
Suite 200
Saint Louis, Missouri 63141
314.535.5005

To find your nearest representative:
800.231.1327
anovafurnishings.com/contact

On the web

For our complete product listing, visit us on the web:
anovafurnishings.com

View case studies and articles at:
anovafurnishings.com/journal/articles

Download product specs, CADdetails and more:
anovafurnishings.com/search-specs

Follow us on social media:
Facebook, Twitter, Pinterest, Google+, LinkedIn, Land8



The background features a series of overlapping, wavy, green lines that create a sense of movement and depth. The lines vary in opacity and color, ranging from a light, almost white green to a deep, dark forest green. They curve and flow across the frame, primarily concentrated on the right side and bottom, leaving the left side mostly white.

Explore the
ANOVA landscape at
anovafurnishings.com